

Recombinant Human GFRAL protein, His-Avi-tagged

Cat. No. GFRAL-6875H Lot. No. (See product label)

SPECIFICATION

| | |
|-------------------------|--|
| Product Overview | Recombinant Human GFRAL protein(Q6UXV0)(Ser19-Glu351), fused with C-terminal His and Avi tag, was expressed in HEK293. |
| Species | Human |
| Source | HEK293 |
| ProteinLength | Ser19-Glu351 |
| Tag | C-His-Avi |
| Form | Lyophilized from 0.22µm filtered solution in PBS (pH 7.4).Normally 8% trehalose is added as protectant before lyophilization. |
| Bio-activity | Immobilized Human GFRAL, His Tag at 1 µg/ml (100 µl/well) on the plate. Dose response curve for Human GDF15, hFc Tag with the EC50 of 2.4 ng/ml determined by ELISA. |
| Molecular Mass | The protein has a predicted MW of 40.7 kDa. Due to glycosylation, the protein migrates to 48-62 kDa based on Tris-Bis PAGE result. |
| Endotoxin | Less than 1EU per µg by the LAL method. |
| Purity | > 95% as determined by Tris-Bis PAGE; > 95% as determined by HPLC |

 Tel: 1-631-559-9269 1-516-512-3133

 Email: info@creative-biomart.com  Fax: 1-631-938-8127

 45-1 Ramsey Road, Shirley, NY 11967, USA

Storage Reconstituted protein stable at -80°C for 12 months, 4°C for 1 week. Use a manual defrost freezer and avoid repeated freeze-thaw cycles.

Reconstitution Centrifuge tubes before opening. Reconstituting to a concentration more than 100 µg/ml is recommended. Dissolve the lyophilized protein in distilled water.

GENE INFORMATION

Gene Name GFRAL GDNF family receptor alpha like [Homo sapiens]

Official Symbol GFRAL

Synonyms GFRAL; GDNF family receptor alpha like; C6orf144, chromosome 6 open reading frame 144; GDNF family receptor alpha-like; bA360D14.1; GRAL; UNQ9356; IVFI9356; C6orf144;

Gene ID 389400

mRNA Refseq NM_207410

Protein Refseq NP_997293

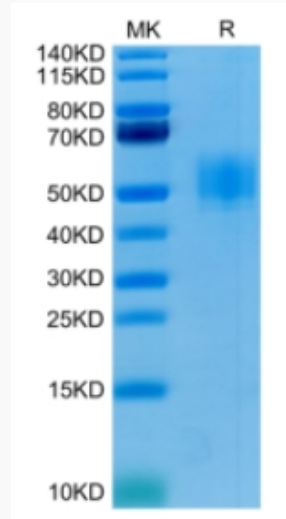
UniProt ID Q6UXV0

 Tel: 1-631-559-9269 1-516-512-3133

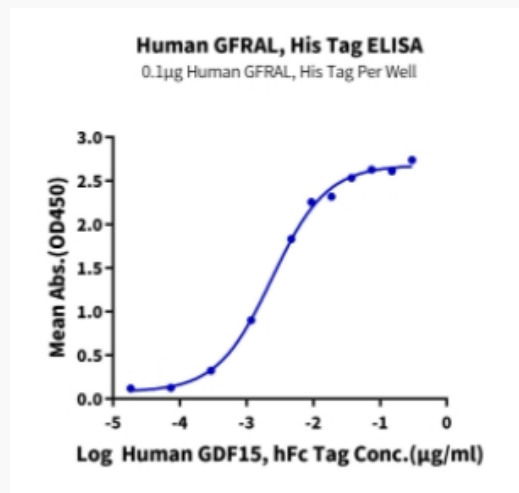
 Email: info@creative-biomart.com  Fax: 1-631-938-8127

 45-1 Ramsey Road, Shirley, NY 11967, USA

Tris-Bis PAGE



ELISA Data



 Tel: 1-631-559-9269 1-516-512-3133

 Email: info@creative-biomart.com  Fax: 1-631-938-8127

 45-1 Ramsey Road, Shirley, NY 11967, USA