

Recombinant Human GGCX Protein, GST-tagged

Cat. No. GGCX-4870H Lot. No. (See product label)

SPECIFICATION

Product Overview	Human GGCX partial ORF (NP_000812, 533 a.a. - 629 a.a.) recombinant protein with GST-tag at N-terminal.
Species	Human
Source	Wheat Germ
Description	This gene encodes an enzyme which catalyzes the posttranslational modification of vitamin K-dependent protein. Many of these vitamin K-dependent proteins are involved in coagulation so the function of the encoded enzyme is essential for hemostasis. Mutations in this gene are associated with vitamin K-dependent coagulation defect and PXE-like disorder with multiple coagulation factor deficiency. Multiple transcript variants encoding different isoforms have been found for this gene
Molecular Mass	36.41 kDa
AA Sequence	ADFPGLHLENFVSEDLGNTSIQLLQGEVTVELVAEQKNQTLREGEKMQLPAGEYHK VYTTSPSPSCYMYVYVNTTELALEQDLAYLQELKEKVENGS
Applications	Enzyme-linked Immunoabsorbent Assay Western Blot (Recombinant protein) Antibody Production Protein Array
Notes	Best use within three months from the date of receipt of this protein.

 Tel: 1-631-559-9269 1-516-512-3133

 Email: info@creative-biomart.com  Fax: 1-631-938-8127

 45-1 Ramsey Road, Shirley, NY 11967, USA

Storage Store at -80 centigrade. Aliquot to avoid repeated freezing and thawing.

Storage Buffer 50 mM Tris-HCl, 10 mM reduced Glutathione, pH=8.0 in the elution buffer.

GENE INFORMATION

Gene Name [GGCX gamma-glutamyl carboxylase \[Homo sapiens \]](#)

Official Symbol [GGCX](#)

Synonyms GGCX; gamma-glutamyl carboxylase; vitamin K-dependent gamma-carboxylase; vitamin K dependent gamma carboxylase; VKCFD1; peptidyl-glutamate 4-carboxylase; FLJ26629;

Gene ID [2677](#)

mRNA Refseq [NM_000821](#)

Protein Refseq [NP_000812](#)

MIM [137167](#)

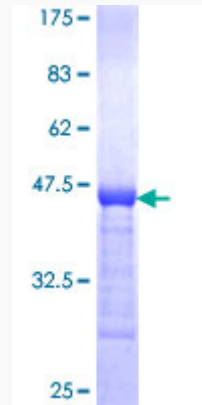
UniProt ID [P38435](#)

 Tel: 1-631-559-9269 1-516-512-3133

 Email: info@creative-biomart.com  Fax: 1-631-938-8127

 45-1 Ramsey Road, Shirley, NY 11967, USA

**Quality Control
Testing**



12.5% SDS-PAGE Stained with Coomassie Blue.

 Tel: 1-631-559-9269 1-516-512-3133

 Email: info@creative-biomart.com  Fax: 1-631-938-8127

 45-1 Ramsey Road, Shirley, NY 11967, USA