

# Recombinant Full Length Human GGPS1 Protein, C-Flag-tagged

**Cat. No.** GGPS1-2093HFL    **Lot. No.** (See product label)

## SPECIFICATION

<b>Product Overview</b>	Recombinant Full Length Human GGPS1 Protein, fused to Flag-tag at C-terminus, was expressed in Mammalian cells.
<b>Species</b>	Human
<b>Source</b>	Mammalian Cells
<b>Description</b>	This gene is a member of the prenyltransferase family and encodes a protein with geranylgeranyl diphosphate (GGPP) synthase activity. The enzyme catalyzes the synthesis of GGPP from farnesyl diphosphate and isopentenyl diphosphate. GGPP is an important molecule responsible for the C20-prenylation of proteins and for the regulation of a nuclear hormone receptor. Alternate transcriptional splice variants, both protein-coding and non-protein-coding, have been found for this gene.
<b>Form</b>	25 mM Tris HCl, pH 7.3, 100 mM glycine, 10% glycerol.
<b>Molecular Mass</b>	34.7 kDa
<b>AA Sequence</b>	MEKTQETVQRILLEPYKYLQLPQKQVVRTKLSQAFNHWLKVPEDKLQIIIEVTEMLHN ASLLIDDIEDNS KLRRGFPVAHSIYGIPSVINSANYVYFLGLEKVLTLDHPDAVKLFTR QLELHQGGQLDIYWRDNYTCPT EEEYKAMVLQKTGGLFGLAVGLMQLFSDYKED LKPLLNTLGLFFQIRDDYANLHSKEYSENKSFCEDLTE GKFSFPTIHAIWSRPESTQV QNILRQRTEINIDIKKYCVHYLEDVGSFEYTRNTLKELEAKAYKQIDARGG NPELVALV KHLKMFKEENE TRTRPLEQKLISEEDLAANDILDYKDDDDKV

 Tel: 1-631-559-9269    1-516-512-3133

 Email: [info@creative-biomart.com](mailto:info@creative-biomart.com)     Fax: 1-631-938-8127

 45-1 Ramsey Road, Shirley, NY 11967, USA

<b>Purity</b>	> 80% as determined by SDS-PAGE and Coomassie blue staining.
<b>Stability</b>	Stable for 12 months from the date of receipt of the product under proper storage and handling conditions. Avoid repeated freeze-thaw cycles.
<b>Storage</b>	Store at -80 centigrade.
<b>Concentration</b>	>50 ug/mL as determined by microplate BCA method.
<b>Preparation</b>	Recombinant protein was captured through anti-DDK affinity column followed by conventional chromatography steps.
<b>Protein Pathways</b>	Metabolic pathways, Terpenoid backbone biosynthesis
<b>Full Length</b>	Full L.

## GENE INFORMATION

<b>Gene Name</b>	GGPS1 geranylgeranyl diphosphate synthase 1 [ Homo sapiens (human) ]
<b>Official Symbol</b>	GGPS1
<b>Synonyms</b>	GGPPS; MDHLO; GGPPS1; MUDHLOV
<b>Gene ID</b>	9453
<b>mRNA Refseq</b>	NM_004837.4
<b>Protein Refseq</b>	NP_004828.1
<b>MIM</b>	606982

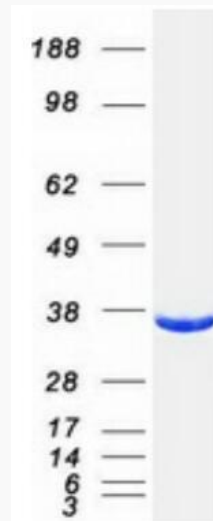
 Tel: 1-631-559-9269 1-516-512-3133

 Email: [info@creative-biomart.com](mailto:info@creative-biomart.com)  Fax: 1-631-938-8127

 45-1 Ramsey Road, Shirley, NY 11967, USA

UniProt ID

O95749



Coomassie blue staining of purified GGPS1 protein.

 Tel: 1-631-559-9269 1-516-512-3133

 Email: [info@creative-biomart.com](mailto:info@creative-biomart.com)  Fax: 1-631-938-8127

 45-1 Ramsey Road, Shirley, NY 11967, USA