

Recombinant Human GGT1 Protein, His-tagged

Cat. No. GGT1-048H Lot. No. (See product label)

SPECIFICATION

Product Overview	Recombinant Human GGT1 Protein with His tag was expressed in E. coli.
Species	Human
Source	E.coli
Description	<p>GGT (g-glutamyltranspeptidase) acts as a glutathionase and catalyzes the transfer of the glutamyl moiety of glutathione to a variety of amino acids and dipeptide acceptors. This enzyme is located on the outer surface of the cell membrane and is widely distributed in mammalian tissues involved in absorption and secretion. In humans, hepatic GGT activity is elevated in some liver diseases. GGT1 is released into the bloodstream after liver damage, and an elevated level of the enzyme may be a useful early sign of hepatocellular carcinoma. GGT5 converts leukotriene C4 to leukotriene D4; it does not, however, convert synthetic substrates that are commonly used to assay GGT. In human serum and in human tissues, there is a marked heterogeneity in GGT, but this heterogeneity can be attributed to different glycosylation of the same peptide rather than to the products of different genes.</p>
Molecular Mass	~60 kDa
AA Sequence	<p>PSASKEPDNHVYTRAAVAADAKQCSKIGRDALRDGGSADVDAIAALLCVGLMNAHS MGIGGGLFLTIYNSTTRKAEVINAREVAPRLAFATMFNSSEQSQKGGLSVAVPGEIR GYELAHQRHGRLPWARLFQPSIQLARQGFPVVGKGLAAALENKRTVIEQQPVLCVCF CRDRKVLREGERLTLPQLADTYETLAIEGAQAFYNGSLTAQIVKDIQAAGGIVTAEDL</p>

 Tel: 1-631-559-9269 1-516-512-3133

 Email: info@creative-biomart.com  Fax: 1-631-938-8127

 45-1 Ramsey Road, Shirley, NY 11967, USA

NNYRAELIEHPLNISLGDVVLYMPSAPLSGPVLALILNILKGYNFSRESVESPEQKGLT
 YHRIVEAFRFAYAKRRTLLGDPKFVDVTEVVRNMTSEFFAAQLRAQISDDTTHPISYYK
 PEFYTPDDGGTAHLSVVAEDGSAVSATSTINLYFGSKVRSPVSGILFNNEMDDFSSP
 SITNEFGVPPSPANFIQPGKQPLSSMCPTIMVGQDQGQVRMVVGAAGGTQITTATALA
 IYNLWFGYDVKRAVEEPRLHNQLLPNVTTVERNIDQAVTAALETRHHHTQIASTFIAV
 VQAIVRTAGGWAAASDSRKGGEAGY

Purity

Transferred into competent cells and the supernatant was purified by NI column affinity chromatography and the purity is > 85% (by SDS-PAGE).

Notes

For research use only, not for use in diagnostic procedure.

Storage

Store at 4 centigrade short term. Aliquot and store at -20 centigrade long term. Avoid freeze-thaw cycles.

Storage Buffer

PBS, 4M Urea, pH7.4

GENE INFORMATION

Gene Name

[GGT1 gamma-glutamyltransferase 1 \[Homo sapiens \(human\) \]](#)

Official Symbol

[GGT1](#)

Synonyms

GGT1; gamma-glutamyltransferase 1; GGT; gamma-glutamyltranspeptidase 1; CD224; D22S672; D22S732; glutamyl transpeptidase; glutathione hydrolase 1; gamma-glutamyl transpeptidase; GTG; GGT 1; MGC96892; MGC96904; MGC96963;

Gene ID

[2678](#)

mRNA Refseq

[NM_001032364](#)

 Tel: 1-631-559-9269 1-516-512-3133

 Email: info@creative-biomart.com  Fax: 1-631-938-8127

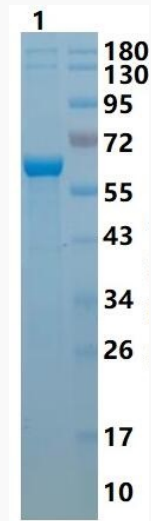
 45-1 Ramsey Road, Shirley, NY 11967, USA

Protein Refseq NP_001027536

MIM 612346

UniProt ID P19440

SDS-PAGE



 Tel: 1-631-559-9269 1-516-512-3133

 Email: info@creative-biomart.com  Fax: 1-631-938-8127

 45-1 Ramsey Road, Shirley, NY 11967, USA