

Recombinant Human GGT1 protein, His-tagged

Cat. No. GGT1-1598H Lot. No. (See product label)

SPECIFICATION

Product Overview	Recombinant Human GGT1 protein(P19440-1)(Pro27-Tyr569), fused with N-terminal His tag, was expressed in HEK293.
Species	Human
Source	N-His
ProteinLength	Pro27-Tyr569
Tag	N-His
Form	Lyophilized from 0.22µm filtered solution in PBS (pH 7.4). Normally 8% trehalose is added as protectant before lyophilization.
Bio-activity	
Molecular Mass	The protein has a predicted MW of 59.69 kDa. Due to enzyme lysis and glycosylation, the protein migrates to 55-65 kDa (heavy chain) and 25-30 kDa (light chain) based on Tris-Bis PAGE result.
Endotoxin	Less than 1EU per µg by the LAL method.
Purity	> 95% as determined by Tris-Bis PAGE; > 95% as determined by HPLC.
Storage	Reconstituted protein stable at -80°C for 12 months, 4°C for 1 week. Use a manual

 Tel: 1-631-559-9269 1-516-512-3133

 Email: info@creative-biomart.com  Fax: 1-631-938-8127

 45-1 Ramsey Road, Shirley, NY 11967, USA

defrost freezer and avoid repeated freeze-thaw cycles.

Reconstitution

Centrifuge tubes before opening. Reconstituting to a concentration more than 100 µg/ml is recommended. Dissolve the lyophilized protein in distilled water.

GENE INFORMATION

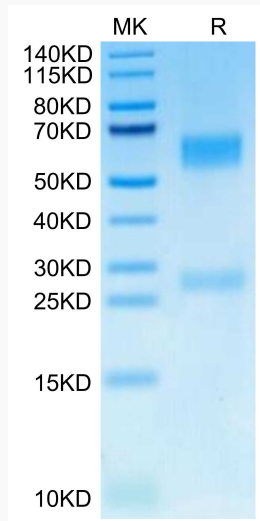
Gene Name	GGT1 gamma-glutamyltransferase 1 [Homo sapiens]
Official Symbol	GGT1
Synonyms	GGT1; gamma-glutamyltransferase 1; GGT; gamma-glutamyltranspeptidase 1; CD224; D22S672; D22S732; glutamyl transpeptidase; glutathione hydrolase 1; gamma-glutamyl transpeptidase; GTG; GGT 1; MGC96892; MGC96904; MGC96963;
Gene ID	2678
mRNA Refseq	NM_001032364
Protein Refseq	NP_001027536
MIM	612346
UniProt ID	P19440

 Tel: 1-631-559-9269 1-516-512-3133

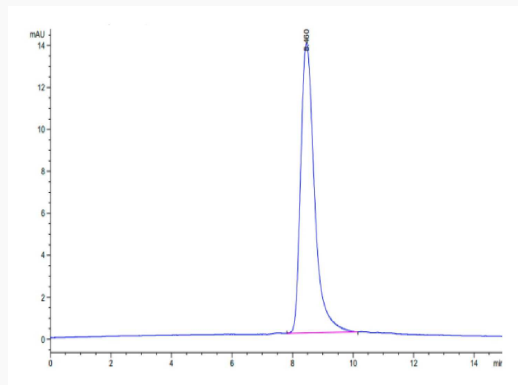
 Email: info@creative-biomart.com  Fax: 1-631-938-8127

 45-1 Ramsey Road, Shirley, NY 11967, USA

Tris-Bis PAGE



SEC-HPLC



 Tel: 1-631-559-9269 1-516-512-3133

 Email: info@creative-biomart.com  Fax: 1-631-938-8127

 45-1 Ramsey Road, Shirley, NY 11967, USA