

Recombinant Human GGT5 Protein, GST-tagged

Cat. No. GGT5-4879H Lot. No. (See product label)

SPECIFICATION

Product Overview	Human GGTLA1 full-length ORF (AAH73999.1, 1 a.a. - 587 a.a.) recombinant protein with GST-tag at N-terminal.
Species	Human
Source	Wheat Germ
Description	This gene is a member of a gene family that encodes gamma-glutamyl transpeptidase enzymes. This enzyme consists of a heavy and a light chain, and is able to hydrolyze the gamma-glutamyl moiety of glutathione. It converts leukotriene C4 to leukotriene D4, however, it doesnt convert synthetic substrates that are commonly used to assay gamma-glutamyl transpeptidase. Three transcript variants encoding different isoforms have been found for this gene. [provided by RefSeq
Molecular Mass	88.7 kDa
AA Sequence	MARGYGATVSLVLLGLGLALAVIVLAVVLSRHQAPCGPQAFHAHAAVAADSKVCSDIG RAILQQQGSPVDATIAALVCTSVVNPQSMGLGGGVIFTIYNVTTGKVEVINARETVPA SHAPSLLDQCAQALPLGTGAQWIGVPGELRGYAEAHRRHGRPLWAQLFQPTIALLR GGHVVAPVLSRFLHNSILRPSLQASTLRQLFFNGTEPLRPQDPLPWPALATTLETVA TEGVEVFYTGRLGQMLVEDIAKEGSQTLQDLAKFQPEVVDALVPLGDYTLYSPPP PAGGAILSFILNVLRGFNFSTESMARPEGRVNVYHHLVETLKFAGQRWRLGDPRS HPKLQNASRDLLGETLAQLIRQQIDGRGDHQLSHYSLAEAWGHGTGTSHVSVLGED GSAVAATSTINTPFGAMVYSPRTGIILNNElldLCERCPRGSGTTPSPAVSGDRVGG

 Tel: 1-631-559-9269 1-516-512-3133

 Email: info@creative-biomart.com  Fax: 1-631-938-8127

 45-1 Ramsey Road, Shirley, NY 11967, USA

APGRCWPPVPGERSPSSMVPSILINKAQQGSKLVIGGAGGELIISAVAQAIMSKLWLGFDLRAAIAAPILHVNSKGCVEYEPNFSQEVQRGLQDRGQNQTQRPFFLNVVQAVSQEGACVYAVSDLRKSGEAAGY

Applications	Enzyme-linked Immunoabsorbent Assay Western Blot (Recombinant protein) Antibody Production Protein Array
Notes	Best use within three months from the date of receipt of this protein.
Storage	Store at -80 centigrade. Aliquot to avoid repeated freezing and thawing.
Storage Buffer	50 mM Tris-HCl, 10 mM reduced Glutathione, pH=8.0 in the elution buffer.

GENE INFORMATION

Gene Name	GGT5 gamma-glutamyltransferase 5 [Homo sapiens]
Official Symbol	GGT5
Synonyms	GGT5; gamma-glutamyltransferase 5; gamma glutamyltransferase like activity 1, GGTLA1; GGT REL; GGT 5; glutathione hydrolase 5; gamma-glutamyl cleaving enzyme; gamma-glutamyltranspeptidase 5; gamma-glutamyltransferase-like activity 1; gamma-glutamyl transpeptidase-related enzyme; gamma-glutamyl transpeptidase-related protein; GGTLA1; GGT-REL; FLJ92733; DKFZp566O011;
Gene ID	2687
mRNA Refseq	NM_001099781

 Tel: 1-631-559-9269 1-516-512-3133

 Email: info@creative-biomart.com  Fax: 1-631-938-8127

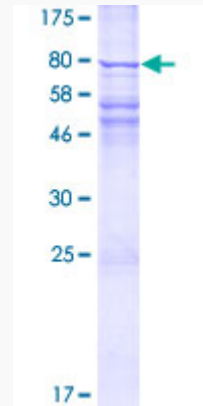
 45-1 Ramsey Road, Shirley, NY 11967, USA

Protein Refseq NP_001093251

MIM 137168

UniProt ID P36269

**Quality Control
Testing**



12.5% SDS-PAGE Stained with Coomassie Blue.

 Tel: 1-631-559-9269 1-516-512-3133

 Email: info@creative-biomart.com  Fax: 1-631-938-8127

 45-1 Ramsey Road, Shirley, NY 11967, USA