

Recombinant Human GGT6 Protein, GST-tagged

Cat. No. GGT6-4878H Lot. No. (See product label)

SPECIFICATION

Product Overview	Human GGT6 full-length ORF (AAH63111.1, 1 a.a. - 493 a.a.) recombinant protein with GST-tag at N-terminal.
Species	Human
Source	Wheat Germ
Description	GGT6 belongs to the gamma-glutamyltransferase (GGT; EC 2.3.2.2) gene family. GGT is a membrane-bound extracellular enzyme that cleaves gamma-glutamyl peptide bonds in glutathione and other peptides and transfers the gamma-glutamyl moiety to acceptors. GGT is also key to glutathione homeostasis because it provides substrates for glutathione synthesis (Heisterkamp et al., 2008 [PubMed 18357469]).[supplied by OMIM
Molecular Mass	76.9 kDa
AA Sequence	MERAEEPVYQKLLPWEPSLESEEEVEEEETSEALVLNPRRHQDSSRNKAGGLPGT WVRVVAALLLAVGCSLAVRQLQNQGRSTGSLGSAVPPPGGSHGPGVYHHGAIIS PAGRELLVAGGNVVDAGVGAALCLAVVHPHATGLGAMFWGLFHDSSSGNSTALTS GPAQTLAPGLGLPAALPTLHLLHARFGRLPWPRLLVGPTTLAQEGFLVDTPLARALV ARGTEGLCPLLCHADGTPLGAGARATNPQLAAVLRSAALPTSDLAGDALLSLLAGD LGVEVPSAVPRPTLEPAEQLPVPQGILFTTPSPSAGPELLALLEAALRSGAPIPDPCP PFLQTAVSPESSALAAVDSSGSVLLLTSSLNCSFGSAHLSPSTGVLLSNLVAKSTTSA WACPLILRGSLLDDTEADVLGLVASGTPDVARAMHTLLRHLAARPPTQAQHQHQGGQ

Tel: 1-631-559-9269 1-516-512-3133

Email: info@creative-biomart.com Fax: 1-631-938-8127

45-1 Ramsey Road, Shirley, NY 11967, USA

QEPTEHPSTCGQGTLQVAAHTEHAHVSSVPHACCPFQGF

Applications

Enzyme-linked Immunoabsorbent Assay
 Western Blot (Recombinant protein)
 Antibody Production
 Protein Array

Notes

Best use within three months from the date of receipt of this protein.

Storage

Store at -80 centigrade. Aliquot to avoid repeated freezing and thawing.

Storage Buffer

50 mM Tris-HCl, 10 mM reduced Glutathione, pH=8.0 in the elution buffer.

GENE INFORMATION

Gene Name

GGT6 gamma-glutamyltransferase 6 [Homo sapiens]

Official Symbol

GGT6

Synonyms

GGT6; gamma-glutamyltransferase 6; gamma glutamyltransferase 6 homolog (rat);
 FLJ90165; GGT 6; glutathione hydrolase 6; gamma-glutamyltranspeptidase 6;
 gamma-glutamyltransferase 6 homolog; FLJ25990;

Gene ID

124975

mRNA Refseq

NM_001122890

Protein Refseq

NP_001116362

MIM

612341

 Tel: 1-631-559-9269 1-516-512-3133

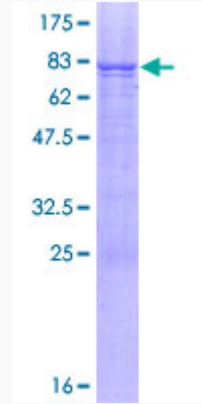
 Email: info@creative-biomart.com  Fax: 1-631-938-8127

 45-1 Ramsey Road, Shirley, NY 11967, USA

UniProt ID

Q6P531

Quality Control
Testing



12.5% SDS-PAGE Stained with Coomassie Blue.

 Tel: 1-631-559-9269 1-516-512-3133

 Email: info@creative-biomart.com  Fax: 1-631-938-8127

 45-1 Ramsey Road, Shirley, NY 11967, USA