

## Recombinant Human GH1 Protein, C-His-tagged

Cat. No. GH1-05H Lot. No. (See product label)

### SPECIFICATION

<b>Product Overview</b>	Recombinant Human GH1 Protein with a C-His tag was expressed in E. coli.
<b>Species</b>	Human
<b>Source</b>	E.coli
<b>Description</b>	<p>The protein encoded by this gene is a member of the somatotropin/prolactin family of hormones which play an important role in growth control. The gene, along with four other related genes, is located at the growth hormone locus on chromosome 17 where they are interspersed in the same transcriptional orientation; an arrangement which is thought to have evolved by a series of gene duplications. The five genes share a remarkably high degree of sequence identity. Alternative splicing generates additional isoforms of each of the five growth hormones, leading to further diversity and potential for specialization. This particular family member is expressed in the pituitary but not in placental tissue as is the case for the other four genes in the growth hormone locus. Mutations in or deletions of the gene lead to growth hormone deficiency and short stature.</p>
<b>Molecular Mass</b>	~18.1KDa, reducing conditions
<b>AA Sequence</b>	<p>MFLQNPQTSLCFSESIPTPSNREETQQKSNLELLRISLLLIQSWLEPVQFLRSVFANS            LVYGASDSNVYDLLKDLEEGIQTLMGRLEDGSPRTGQIFKQTYSKFDTNSHNDDALL            KNYGLLYCFRKDMDKVVETFLRIVQCRSVEGSCGFLEHHHHHHH</p>
<b>Purity</b>	>90%, by SDS-PAGE

 Tel: 1-631-559-9269 1-516-512-3133

 Email: [info@creative-biomart.com](mailto:info@creative-biomart.com)  Fax: 1-631-938-8127

 45-1 Ramsey Road, Shirley, NY 11967, USA

<b>Storage</b>	Store it under sterile conditions at -20 to -80 centigrade. It is recommended that the protein be aliquoted for optimal storage. Avoid repeated freeze-thaw cycles.
<b>Concentration</b>	0.12 mg/mL
<b>Storage Buffer</b>	Supplied as a 0.2 µm filtered solution in 20 mM Tris, 300 mM NaCl, pH 8.0
<b>GENE INFORMATION</b>	
<b>Gene Name</b>	GH1 growth hormone 1 [ Homo sapiens (human) ]
<b>Official Symbol</b>	GH1
<b>Synonyms</b>	GH1; growth hormone 1; GH; GHN; GH-N; GHB5; IGHD2; hGH-N; IGHD1A; IGHD1B; somatotropin; growth hormone B5; pituitary growth hormone
<b>Gene ID</b>	2688
<b>mRNA Refseq</b>	NM_000515
<b>Protein Refseq</b>	NP_000506
<b>MIM</b>	139250
<b>UniProt ID</b>	P01241

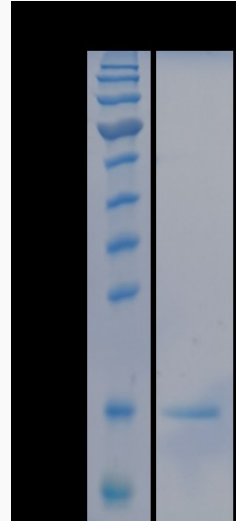
 Tel: 1-631-559-9269 1-516-512-3133

 Email: [info@creative-biomart.com](mailto:info@creative-biomart.com)  Fax: 1-631-938-8127

 45-1 Ramsey Road, Shirley, NY 11967, USA



**SDS-PAGE**



12% reducing SDS-PAGE analysis of purified growth hormone (~ 1  $\mu$ g protein loaded)

 Tel: 1-631-559-9269 1-516-512-3133

 Email: [info@creative-biomart.com](mailto:info@creative-biomart.com)  Fax: 1-631-938-8127

 45-1 Ramsey Road, Shirley, NY 11967, USA