

Recombinant Rabbit GH1 Protein, His-tagged

Cat. No. GH1-100R Lot. No. (See product label)

SPECIFICATION

Product Overview	Recombinant Rabbit GH1 Protein, fused to His-tag, was expressed in E. coli.
Species	Rabbit
Source	E.coli
Description	<p>The protein encoded by this gene is a member of the somatotropin/prolactin family of hormones which play an important role in growth control. The gene, along with four other related genes, is located at the growth hormone locus on chromosome 17 where they are interspersed in the same transcriptional orientation; an arrangement which is thought to have evolved by a series of gene duplications. The five genes share a remarkably high degree of sequence identity. Alternative splicing generates additional isoforms of each of the five growth hormones, leading to further diversity and potential for specialization. This particular family member is expressed in the pituitary but not in placental tissue as is the case for the other four genes in the growth hormone locus. Mutations in or deletions of the gene lead to growth hormone deficiency and short stature.</p>
Form	Lyophilized from sterile 50mM Tris, 300mM NaCl, pH 8.0, 5% trehalose, 5% mannitol.
Molecular Mass	22.9 kDa
AA Sequence	<p>MFPAMPLSSLFANAVLRAQHLHQLAADTYKEFERAYIPEGQRYSIQNAQA AFCFSET IPAPTGKDEAQQRSDMELLRFSLLLIQSWLGPVQFLSRAFTNTLVFGTSDRVYEKLLK DLEEGIQALMRELEDGSPRVGQLLKQTYDKFDTNLRGDDALLKNYGLLSCFKKDLHK</p>

 Tel: 1-631-559-9269 1-516-512-3133

 Email: info@creative-biomart.com  Fax: 1-631-938-8127

 45-1 Ramsey Road, Shirley, NY 11967, USA

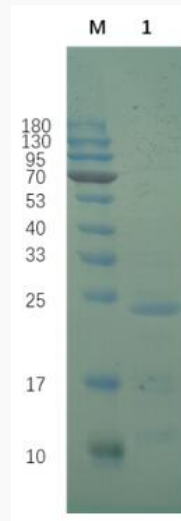
AETYL RVMKCRRFV ESSCVFLEHHHHHH

Purity >90%**Storage** Store it under sterile conditions at -20 to -80 centigrade. It is recommended that the protein be aliquoted for optimal storage. Avoid repeated freeze-thaw cycles.

GENE INFORMATION

Gene Name LOC100356068 somatotropin [*Oryctolagus cuniculus* (rabbit)]**Official Symbol** GH1**Synonyms** gh; GH1; GHB1**Gene ID** 100356068**mRNA Refseq** NM_001329075**Protein Refseq** NP_001316004**UniProt ID** P46407 Tel: 1-631-559-9269 1-516-512-3133 Email: info@creative-biomart.com  Fax: 1-631-938-8127 45-1 Ramsey Road, Shirley, NY 11967, USA

SDS-PAGE



Reducing 12% SDS-PAGE analysis profile of purified Rabbit Growth Hormone (CBB stained).

 Tel: 1-631-559-9269 1-516-512-3133

 Email: info@creative-biomart.com  Fax: 1-631-938-8127

 45-1 Ramsey Road, Shirley, NY 11967, USA