

Active Recombinant Human GH1 (1-217aa)

Cat. No. GH1-241H Lot. No. (See product label)

SPECIFICATION

Product Overview	Human GH1 (P01241, 1 a.a.-217 a.a.) full-length recombinant protein expressed in Escherichia coli.
Species	Human
Source	Human
Description	Somatotropin is a protein that in humans is encoded by the GH1 gene. The protein encoded by this gene is a member of the somatotropin/prolactin family of hormones that play an important role in growth control. The gene, along with four other related genes, is located at the growth hormone locus on chromosome 17 where they are interspersed in the same transcriptional orientation, an arrangement thought to have evolved by a series of gene duplications.
Sequence	MATGSRTSLL LAFGLLCLPW LQEGSAFPTI PLSRLFDNAM LRAHRLHQLA FDTYQEFEEA YIPKEQKYSF LQNPQTSLCF SESIPTPSNR EETQQKSNLE LLRISLLLIQ SWLEPVQFLR SVFANSLVYG ASDSNVYDLL KDLEEGIQTL MGRLEDGSPR TGQIFKQTYS KFDNTSHNDD ALLKNYGLLY CFRKDMDKVE TFLRIVQCRS VEGSCGF
Theoretical MW (kDa)	22
Form	Lyophilized
Preparation Method	Escherichia coli expression system

 Tel: 1-631-559-9269 1-516-512-3133

 Email: info@creative-biomart.com  Fax: 1-631-938-8127

 45-1 Ramsey Road, Shirley, NY 11967, USA

Purity	> 95% by SDS-PAGE and HPLC
Endotoxin Level	< 0.1 ng/ug (1 EU/ug)
Activity	The ED50 was determined by the dose-dependent cell proliferation assay using the rat lymphoma, Nb2-11, and was found to be in the range of 0.1 ng/mL.
Application	SDS-PAGE
Storage Buffer	Lyophilized from 0.005 mM NaHCO ₃ solution pH 10
Storage	Store at -20°C on dry atmosphere for 2 years. After reconstitution with deionized water, store at 4°C for 1 month or store at -20°C for 6 months. Aliquot to avoid repeated freezing and thawing.
Unitprot ID	P01241
Pathways	Cytokine-cytokine receptor interaction; Jak-STAT signaling pathway; Neuroactive ligand-receptor interaction

GENE INFORMATION

Gene Name	GH1 growth hormone 1 [Homo sapiens]
Official Symbol	GH1
Synonyms	GH; GH-N; GHN; hGH-N; Growth hormone; Pituitary growth hormone; growth hormone 1; GH1; IGHD1B; Somatotropin; hGH
Gene ID	2688

 Tel: 1-631-559-9269 1-516-512-3133

 Email: info@creative-biomart.com  Fax: 1-631-938-8127

 45-1 Ramsey Road, Shirley, NY 11967, USA

mRNA Refseq [NM_000515](#)

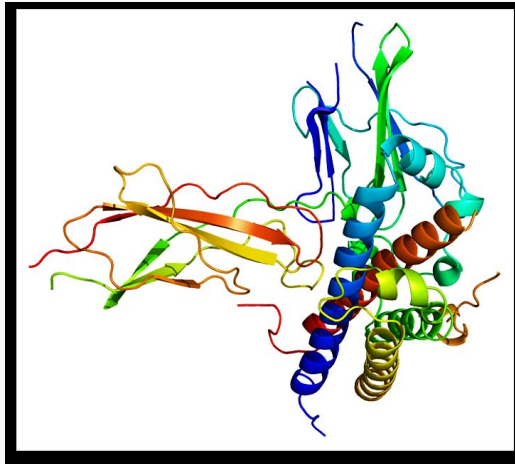
Protein Refseq [NP_000506](#)

MIM [139250](#)

Chromosome
Location [17q24.2](#)

Function growth factor activity; growth hormone activity; growth hormone receptor binding; prolactin receptor binding; protein binding

PDBrendering based
on 1a22.



 Tel: 1-631-559-9269 1-516-512-3133

 Email: info@creative-biomart.com  Fax: 1-631-938-8127

 45-1 Ramsey Road, Shirley, NY 11967, USA