

Recombinant Human GH1 Protein (Phe27-Phe217), N-cleavage tagged

Cat. No. GH1-2439H Lot. No. (See product label)

SPECIFICATION

Product Overview	Recombinant human GH1 (Phe27~Phe217) protein fused with the N-terminal cleavage was expressed in E. coli.
Species	Human
Source	E.coli
ProteinLength	Phe27-Phe217
Molecular Mass	24.48 kDa
Purity	>90 % as determined by SDS-PAGE.
Notes	For research use only.
Storage	Use a manual defrost freezer and avoid repeated freeze thaw cycles. Store at 2 to 8 centigrade for one week. Store at -20 to -80 centigrade for twelve months from the date of receipt.
Storage Buffer	Supplied as solution form in 50 mM Tris-HCl pH 7.0, 150 mM NaCl or lyophilized from 50 mM Tris-HCl pH 7.0, 150 mM NaCl.
Reconstitution	Reconstitute in sterile water for a stock solution.

 Tel: 1-631-559-9269 1-516-512-3133

 Email: info@creative-biomart.com  Fax: 1-631-938-8127

 45-1 Ramsey Road, Shirley, NY 11967, USA



Shipping

In general, proteins are provided as lyophilized powder/frozen liquid. They are shipped out with dry ice/blue ice unless customers require otherwise.

GENE INFORMATION

Gene Name

[GH1 growth hormone 1 \[Homo sapiens \(human\) \]](#)

Official Symbol

[GH1](#)

Synonyms

GH1; growth hormone 1; somatotropin; GH; GH N; GHN; hGH N; pituitary growth hormone; GH-N; hGH-N; IGHD1B;

Gene ID

[2688](#)

mRNA Refseq

[NM_000515](#)

Protein Refseq

[NP_000506](#)

MIM

[139250](#)

UniProt ID

[B1A4G6](#)

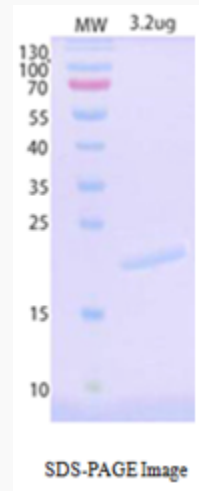
Tel: 1-631-559-9269 1-516-512-3133

Email: info@creative-biomart.com Fax: 1-631-938-8127

45-1 Ramsey Road, Shirley, NY 11967, USA



SDS-PAGE



Tel: 1-631-559-9269 1-516-512-3133

Email: info@creative-biomart.com Fax: 1-631-938-8127

45-1 Ramsey Road, Shirley, NY 11967, USA