

Active Recombinant Human GH1 protein, His-tagged

Cat. No. GH1-2582H Lot. No. (See product label)

SPECIFICATION

Product Overview	Active Recombinant Human Somatotropin/GH-N/GH1 Protein is produced by E. coli expression system. The target protein is expressed with sequence (Phe27-Phe217) of human GH (Accession #NP_000506.2) fused with an initial Met at the N-terminus and a 6xHis tag at the C-terminus.
Species	Human
Source	E.coli
ProteinLength	Phe27-Phe217
Form	Lyophilized from a 0.22 µm filtered solution of PBS, pH 7.4.
Bio-activity	Measured by its binding ability in a functional ELISA. Immobilized Human GH1 at 2 µg/mL (100 µL/well) can bind Human GHR with a linear range of 0.1-19.4 ng/mL.
Molecular Mass	23 kDa
Endotoxin	< 0.1 EU/µg of the protein by LAL method.
Purity	> 92% by SDS-PAGE.
Storage	Store the lyophilized protein at -20°C to -80 °C for long term. After reconstitution, the protein solution is stable at -20 °C for 3 months, at 2-8 °C for up to 1 week.

 Tel: 1-631-559-9269 1-516-512-3133

 Email: info@creative-biomart.com  Fax: 1-631-938-8127

 45-1 Ramsey Road, Shirley, NY 11967, USA

Reconstitution Reconstitute to a concentration of 0.1-0.5 mg/mL in sterile distilled water.

GENE INFORMATION

Gene Name GH1 growth hormone 1 [Homo sapiens]

Official Symbol GH1

Synonyms GH1; growth hormone 1; somatotropin; GH; GH N; GHN; hGH N; pituitary growth hormone; GH-N; hGH-N; IGHD1B;

Gene ID 2688

mRNA Refseq NM_000515

Protein Refseq NP_000506

MIM 139250

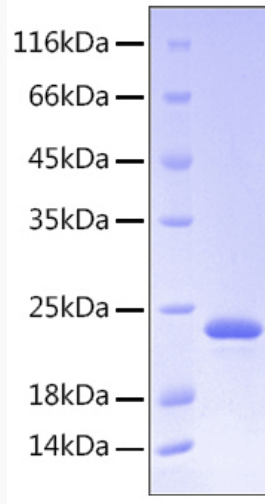
UniProt ID P01241

 Tel: 1-631-559-9269 1-516-512-3133

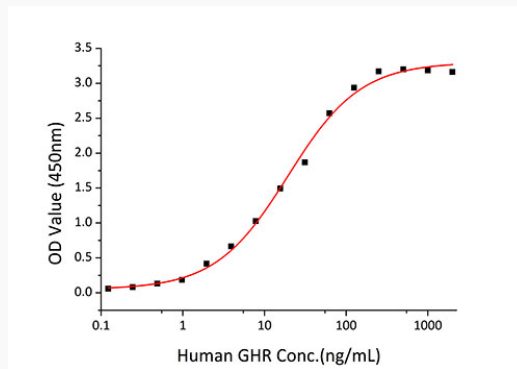
 Email: info@creative-biomart.com  Fax: 1-631-938-8127

 45-1 Ramsey Road, Shirley, NY 11967, USA

SDS-PAGE



Bio-activity



 Tel: 1-631-559-9269 1-516-512-3133

 Email: info@creative-biomart.com  Fax: 1-631-938-8127

 45-1 Ramsey Road, Shirley, NY 11967, USA