

Recombinant Human GH1 protein, His-tagged

Cat. No. GH1-457H Lot. No. (See product label)

SPECIFICATION

Product Overview	Recombinant Human GH1 (P01241) aa. (Pro28~Phe217) fused with His tag was produced in HEK293F cells.
Species	Human
Source	HEK293
ProteinLength	Pro28~Phe217
Description	<p>The protein encoded by this gene is a member of the somatotropin/prolactin family of hormones which play an important role in growth control. The gene, along with four other related genes, is located at the growth hormone locus on chromosome 17 where they are interspersed in the same transcriptional orientation; an arrangement which is thought to have evolved by a series of gene duplications. The five genes share a remarkably high degree of sequence identity. Alternative splicing generates additional isoforms of each of the five growth hormones, leading to further diversity and potential for specialization. This particular family member is expressed in the pituitary but not in placental tissue as is the case for the other four genes in the growth hormone locus. Mutations in or deletions of the gene lead to growth hormone deficiency and short stature.</p>
Form	Freeze-dried powder
Molecular Mass	Predicted Molecular Mass: 23.6kDa; Accurate Molecular Mass: 20kDa as determined by SDS-PAGE reducing conditions.

 Tel: 1-631-559-9269 1-516-512-3133

 Email: info@creative-biomart.com  Fax: 1-631-938-8127

 45-1 Ramsey Road, Shirley, NY 11967, USA

Endotoxin	<1.0EU per 1ug (determined by the LAL method)
Purity	> 95%
Characteristic	Isoelectric point is 5.3.
Applications	SDS-PAGE; WB; ELISA; IP; CoIP; EMSA; Reporter Assays; Purification; Amine Reactive Labeling
Stability	The thermal stability is described by the loss rate. The loss rate was determined by accelerated thermal degradation test, that is, incubate the protein at 37°C for 48h, and no obvious degradation and precipitation were observed. The loss rate is less than 5% within the expiration date under appropriate storage condition.
Storage	Avoid repeated freeze/thaw cycles. Store at 2-8°C for one month. Aliquot and store at -80°C for 12 months.
Concentration	200ug/mL
Storage buffer	20mM Tris, 150mM NaCl, pH8.0, containing 1mM EDTA, 1mM DTT, 5% Trehalose and Proclin300.
Reconstitution	Reconstitute in 20mM Tris, 150mM NaCl (pH8.0) to a concentration of 0.1-1.0 mg/mL. Do not vortex

GENE INFORMATION

Gene Name	GH1 growth hormone 1 [Homo sapiens (human)]
Official Symbol	GH1

 Tel: 1-631-559-9269 1-516-512-3133

 Email: info@creative-biomart.com  Fax: 1-631-938-8127

 45-1 Ramsey Road, Shirley, NY 11967, USA

Synonyms GH1; growth hormone 1; GH; GHN; GH-N; GHB5; hGH-N; IGHD1B; somatotropin; growth hormone B5; pituitary growth hormone

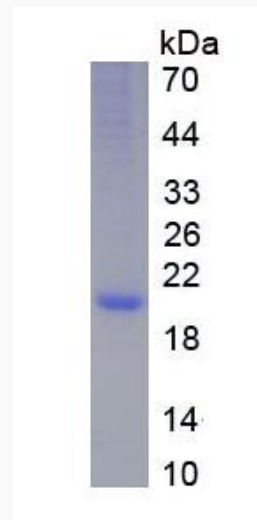
Gene ID [2688](#)

mRNA Refseq [NM_000515.4](#)

Protein Refseq [NP_000506.2](#)

UniProt ID [P01241](#)

SDS-PAGE



 Tel: 1-631-559-9269 1-516-512-3133

 Email: info@creative-biomart.com  Fax: 1-631-938-8127

 45-1 Ramsey Road, Shirley, NY 11967, USA