

## Recombinant Human GH1 protein, His&Avi-tagged, Biotinylated

**Cat. No.** GH1-6855H    **Lot. No.** (See product label)

### SPECIFICATION

<b>Product Overview</b>	Recombinant Human GH1 protein(P01241)(27-217aa), fused with N-terminal His tag and C-terminal Avi tag, was expressed in HEK293.
<b>Species</b>	Human
<b>Source</b>	HEK293
<b>ProteinLength</b>	27-217aa
<b>Tag</b>	N-His&C-Avi
<b>Conjugation/Label</b>	Biotin
<b>Form</b>	If the delivery form is liquid, the default storage buffer is Tris/PBS-based buffer, 5%-50% glycerol. If the delivery form is lyophilized powder, the buffer before lyophilization is Tris/PBS-based buffer, 6% Trehalose, pH 8.0.
<b>Molecular Mass</b>	27-217aa
<b>Purity</b>	Greater than 90% as determined by SDS-PAGE. Greater than 90% as determined by SEC-HPLC.
<b>Storage</b>	Store at -20°C/-80°C upon receipt, aliquoting is necessary for mutiple use. Avoid repeated freeze-thaw cycles.

 Tel: 1-631-559-9269    1-516-512-3133

 Email: [info@creative-biomart.com](mailto:info@creative-biomart.com)     Fax: 1-631-938-8127

 45-1 Ramsey Road, Shirley, NY 11967, USA

**Reconstitution** We recommend that this vial be briefly centrifuged prior to opening to bring the contents to the bottom. Please reconstitute protein in deionized sterile water to a concentration of 0.1-1.0 mg/mL. We recommend to add 5-50% of glycerol (final concentration) and aliquot for long-term storage at -20°C/-80°C.

**AA Sequence**  
 FPTIPLSRLFDNAMLRAHRLHQLAFDITYQEFEEAYIPKEQKYSFLQNPQTSLCFSESI  
 PTPSNREETQQKSNLELLRISLLLIQSWLEPVQFLRSVFANSLVYGASDSNVYDLLKD  
 LEEGIQTLMGRLDGSPTGQIFKQTYSKFDTNSHNDDALLKNYGLLYCFRKDMDK  
 VETFLRIVQCRSVEGSCGF

**Conjugation** Biotin

## GENE INFORMATION

**Gene Name** GH1 growth hormone 1 [ Homo sapiens ]

**Official Symbol** GH1

**Synonyms** GH1; growth hormone 1; somatotropin; GH; GH N; GHN; hGH N; pituitary growth hormone; GH-N; hGH-N; IGHD1B;

**Gene ID** 2688

**mRNA Refseq** NM\_000515

**Protein Refseq** NP\_000506

**MIM** 139250

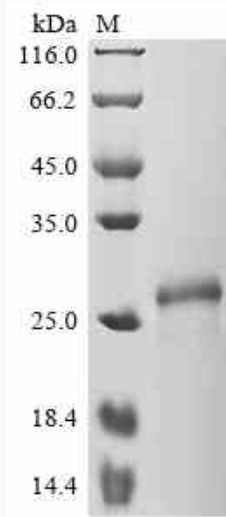
**UniProt ID** P01241

 Tel: 1-631-559-9269 1-516-512-3133

 Email: [info@creative-biomart.com](mailto:info@creative-biomart.com)  Fax: 1-631-938-8127

 45-1 Ramsey Road, Shirley, NY 11967, USA

**SDS-PAGE**



 Tel: 1-631-559-9269 1-516-512-3133

 Email: [info@creative-biomart.com](mailto:info@creative-biomart.com)  Fax: 1-631-938-8127

 45-1 Ramsey Road, Shirley, NY 11967, USA