

## Recombinant Pig GH1 protein, His-tagged

Cat. No. GH1-949P Lot. No. (See product label)

### SPECIFICATION

<b>Product Overview</b>	Recombinant Pig GH1 protein(Phe27~Phe216), fused with N-terminal His tag, was expressed in E. coli.
<b>Species</b>	Pig
<b>Source</b>	E.coli
<b>ProteinLength</b>	Phe27~Phe216
<b>Form</b>	20mM Tris, 150mM NaCl, pH8.0, containing 1mM EDTA, 1mM DTT, 0.01% SKL, 5% Trehalose and Proclin300.
<b>Molecular Mass</b>	25kDa
<b>Endotoxin</b>	<1.0EU per 1g (determined by the LAL method)
<b>Purity</b>	> 95%
<b>Storage</b>	Avoid repeated freeze/thaw cycles. Store at 2-8°C for one month. Aliquot and store at -80°C for 12 months.
<b>Reconstitution</b>	Reconstitute in 20mM Tris, 150mM NaCl (pH8.0) to a concentration of 0.1-1.0 mg/mL. Do not vortex.

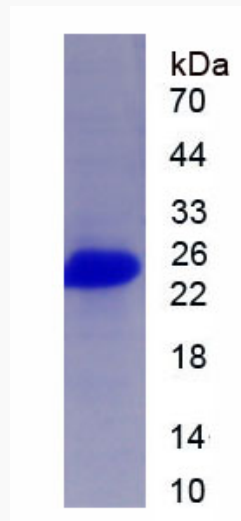
### GENE INFORMATION

 Tel: 1-631-559-9269 1-516-512-3133

 Email: [info@creative-biomart.com](mailto:info@creative-biomart.com)  Fax: 1-631-938-8127

 45-1 Ramsey Road, Shirley, NY 11967, USA

<b>Gene Name</b>	GH1 growth hormone 1 [ Sus scrofa (pig) ]
<b>Official Symbol</b>	GH1
<b>Synonyms</b>	GH1; growth hormone 1; somatotropin; GH
<b>Gene ID</b>	396884
<b>mRNA Refseq</b>	NM_213869
<b>Protein Refseq</b>	NP_999034
<b>UniProt ID</b>	F6M7Y8

**SDS-PAGE**

 Tel: 1-631-559-9269 1-516-512-3133

 Email: [info@creative-biomart.com](mailto:info@creative-biomart.com)  Fax: 1-631-938-8127

 45-1 Ramsey Road, Shirley, NY 11967, USA