

## Recombinant Human GH2 Protein, GST-tagged

**Cat. No.** GH2-4884H    **Lot. No.** (See product label)

### SPECIFICATION

<b>Product Overview</b>	Human GH2 full-length ORF ( AAH20760.1, 27 a.a. - 217 a.a.) recombinant protein with GST-tag at N-terminal.
<b>Species</b>	Human
<b>Source</b>	Wheat Germ
<b>Description</b>	<p>The protein encoded by this gene is a member of the somatotropin/prolactin family of hormones which play an important role in growth control. The gene, along with four other related genes, is located at the growth hormone locus on chromosome 17 where they are interspersed in the same transcriptional orientation; an arrangement which is thought to have evolved by a series of gene duplications. The five genes share a remarkably high degree of sequence identity. Alternative splicing generates additional isoforms of each of the five growth hormones, leading to further diversity and potential for specialization. As in the case of its pituitary counterpart, growth hormone 1, the predominant isoform of this particular family member shows similar somatogenic activity, with reduced lactogenic activity. Mutations in this gene lead to placental growth hormone/lactogen deficiency. [provided by RefSeq</p>
<b>Molecular Mass</b>	46.75 kDa
<b>AA Sequence</b>	<p>FPTIPLSRLFDNAMLRRRLYLQLAYDTYQEFEEAYILKEQKYSFLQNPQTSLCFSESI  PTPSNRVKTQQKSNLELLRISLLLIQSWLEPVQLLRVVFANSLVYGASDSNVYRHLKD  LEEGIQTLMWRLLEDGSPRTGQIFNQSYSKFDTKSHNDDALLKNYGLLYCFRKDMDK</p>

 Tel: 1-631-559-9269    1-516-512-3133

 Email: [info@creative-biomart.com](mailto:info@creative-biomart.com)     Fax: 1-631-938-8127

 45-1 Ramsey Road, Shirley, NY 11967, USA

VETFLRIVQCRSVEGSCGF

**Applications**

Enzyme-linked Immunoabsorbent Assay  
 Western Blot (Recombinant protein)  
 Antibody Production  
 Protein Array

**Notes**

Best use within three months from the date of receipt of this protein.

**Storage**

Store at -80 centigrade. Aliquot to avoid repeated freezing and thawing.

**Storage Buffer**

50 mM Tris-HCl, 10 mM reduced Glutathione, pH=8.0 in the elution buffer.

**GENE INFORMATION**

**Gene Name**

[GH2 growth hormone 2 \[ Homo sapiens \]](#)

**Official Symbol**

[GH2](#)

**Synonyms**

GH2; growth hormone 2; growth hormone variant; GH V; GHL; GHV; hGH V; placenta specific growth hormone; placental specific growth hormone; placenta-specific growth hormone; placental-specific growth hormone; GH-V; hGH-V;

**Gene ID**

[2689](#)

**mRNA Refseq**

[NM\\_002059](#)

**Protein Refseq**

[NP\\_002050](#)

**MIM**

[139240](#)

 Tel: 1-631-559-9269 1-516-512-3133

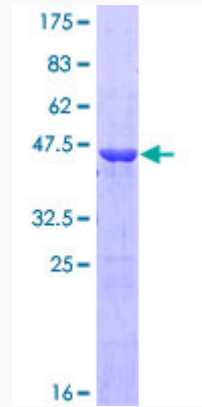
 Email: [info@creative-biomart.com](mailto:info@creative-biomart.com)  Fax: 1-631-938-8127

 45-1 Ramsey Road, Shirley, NY 11967, USA

UniProt ID

P01242

Quality Control  
Testing



12.5% SDS-PAGE Stained with Coomassie Blue.

 Tel: 1-631-559-9269 1-516-512-3133

 Email: [info@creative-biomart.com](mailto:info@creative-biomart.com)  Fax: 1-631-938-8127

 45-1 Ramsey Road, Shirley, NY 11967, USA