

Recombinant Human GHDC Protein, Myc/DDK-tagged, C13 and N15-labeled

Cat. No. GHDC-3850H **Lot. No.** (See product label)

SPECIFICATION

Product Overview	GHDC MS Standard C13 and N15-labeled recombinant protein (NP_115873) with a C-terminal MYC/DDK tag, was expressed in HEK293 cells.
Species	Human
Source	HEK293
Description	GHDC (GH3 Domain Containing) is a Protein Coding gene. Among its related pathways are Innate Immune System.
Molecular Mass	57.5 kDa
AA Sequence	<p>MLLWPLLLLLLLLPTLALLRQQRSQDARLSWLAGLQHRVAWGALVWAATWQRRRL EQSTLHVHQSQQQALRWCLQGAQRPHCSLRRSTDISTFRNHLPLTKASQTQQEDS GEQPLPPTSNDLGEASLQATLLGLAALNKAYPEVLAQGRTARVTLTSPWPRPLPW PGNTLGQVGTPTGDKDPRALLLDALRSPGLRALEAGTAVELLDVFLGLETDGEELAGA IAAGNPGAPLRERAAELREALEQGPRGLALRLWPKLQVVVTLTDAGGQAEVAALGA LWCQGLAFFSPAYAASGGVLGLNLQPEQPHGLYLLPPGAPFIELLPVKEGTQEEAAS TLLLAEAQQGKEYELVLTDRASLTRCRLGDVVRVVGAYNQCPVRFICRLDQTL SVR GEDIGEDLFSEALGRAVGQWAGAKLLDHGCVVSSILDSSAGSAPHYEVFVALRGLR NLSEENRDKLDHCLQEASPRYKSLRFWGSVGPVHVLVGGAFRALRAALAACPS SPFPPAMPVLRHRHLAQCLQERVVSTRTRPLEQKLISEEDLAANDILDYKDDDDKV</p>
Purity	> 80% as determined by SDS-PAGE and Coomassie blue staining

 Tel: 1-631-559-9269 1-516-512-3133

 Email: info@creative-biomart.com  Fax: 1-631-938-8127

 45-1 Ramsey Road, Shirley, NY 11967, USA

Stability	Stable for 3 months from receipt of products under proper storage and handling conditions.
Storage	Store at -80 centigrade. Avoid repeated freeze-thaw cycles.
Concentration	50 µg/mL as determined by BCA
Storage Buffer	100 mM glycine, 25 mM Tris-HCl, pH 7.3.

GENE INFORMATION

Gene Name	GHDC GH3 domain containing [Homo sapiens (human)]
Official Symbol	GHDC
Synonyms	GHDC; GH3 domain containing; GH3 domain-containing protein; LGP1; homolog of mouse LGP1; D11LGP1;
Gene ID	84514
mRNA Refseq	NM_032484
Protein Refseq	NP_115873
MIM	608587
UniProt ID	Q8N2G8

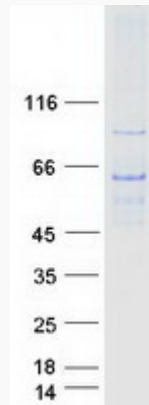
 Tel: 1-631-559-9269 1-516-512-3133

 Email: info@creative-biomart.com  Fax: 1-631-938-8127

 45-1 Ramsey Road, Shirley, NY 11967, USA



SDS-PAGE



Tel: 1-631-559-9269 1-516-512-3133

Email: info@creative-biomart.com Fax: 1-631-938-8127

45-1 Ramsey Road, Shirley, NY 11967, USA