

## Recombinant Human GHDC Protein, GST-tagged

Cat. No. GHDC-4885H Lot. No. (See product label)

### SPECIFICATION

<b>Product Overview</b>	Human GHDC full-length ORF ( NP_115873.1, 1 a.a. - 530 a.a.) recombinant protein with GST-tag at N-terminal.
<b>Species</b>	Human
<b>Source</b>	Wheat Germ
<b>Description</b>	GHDC (GH3 Domain Containing) is a Protein Coding gene. Among its related pathways are Innate Immune System.
<b>Molecular Mass</b>	83.9 kDa
<b>AA Sequence</b>	<p>MLLWPLLLLLLLLLPTLALLRQQRSQDARLSWLAGLQHRVAWGALVWAATWQRRRL            EQSTLHVHQSQQQALRWCLQGAQRPHCSLRRSTDISTFRNHLPLTKASQTQQEDS            GEQPLPPTSNDLGEASLQATLLGLAALNKAYPEVLAQGRRTARVTLTSPWPRPLPW            PGNTLGQVGTGPKDPRALLLDALRSPGLRALEAGTAVELLDVFLGLETDGEELAGA            IAAGNPGAPLRERAAELREALEQGPRGLALRLWPKLQVVVTLTDAGGQAEVAALGA            LWCQGLAFFSPAYAASGGVLGLNLQPEQPHGLYLLPPGAPFIELLPVKEGTQEEAAS            TLLLAEAQQGKEYELVLTDRASLTRCRLGDVVRVVGAYNQCPVRFICRLDQTLQSVR            GEDIGEDLFSEALGRAVGQWAGAKLLDHGCVESSILDSSAGSAPHYEVFVALRGLR            NLSEENRDKLDHCLQEASPRYKSLRFWGSVGPVHVLVGGQAFRALRAALAACPS            SPFPPAMPRVLRHRHLAQCLQERVVS</p>
<b>Applications</b>	Enzyme-linked Immunoabsorbent Assay Western Blot (Recombinant protein)

 Tel: 1-631-559-9269 1-516-512-3133

 Email: [info@creative-biomart.com](mailto:info@creative-biomart.com)  Fax: 1-631-938-8127

 45-1 Ramsey Road, Shirley, NY 11967, USA



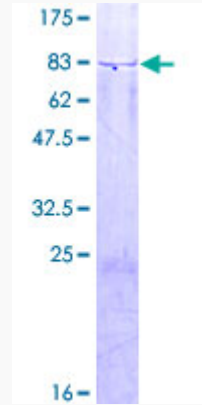
	Antibody Production Protein Array
<b>Notes</b>	Best use within three months from the date of receipt of this protein.
<b>Storage</b>	Store at -80 centigrade. Aliquot to avoid repeated freezing and thawing.
<b>Storage Buffer</b>	50 mM Tris-HCl, 10 mM reduced Glutathione, pH=8.0 in the elution buffer.
<b>GENE INFORMATION</b>	
<b>Gene Name</b>	GHDC GH3 domain containing [ Homo sapiens ]
<b>Official Symbol</b>	GHDC
<b>Synonyms</b>	GHDC; GH3 domain containing; GH3 domain-containing protein; LGP1; homolog of mouse LGP1; D11LGP1;
<b>Gene ID</b>	84514
<b>mRNA Refseq</b>	NM_001142622
<b>Protein Refseq</b>	NP_001136094
<b>MIM</b>	608587
<b>UniProt ID</b>	Q8N2G8

Tel: 1-631-559-9269 1-516-512-3133

Email: [info@creative-biomart.com](mailto:info@creative-biomart.com) Fax: 1-631-938-8127

45-1 Ramsey Road, Shirley, NY 11967, USA

**Quality Control  
Testing**



12.5% SDS-PAGE Stained with Coomassie Blue.

 Tel: 1-631-559-9269 1-516-512-3133

 Email: [info@creative-biomart.com](mailto:info@creative-biomart.com)  Fax: 1-631-938-8127

 45-1 Ramsey Road, Shirley, NY 11967, USA