

## Recombinant Human GHR Protein, His-SUMO-tagged

Cat. No. GHR-1226H Lot. No. (See product label)

### SPECIFICATION

<b>Product Overview</b>	Recombinant Human GHR Protein (19-264aa) was expressed in E. coli with N-terminal His-SUMO-tag.
<b>Species</b>	Human
<b>Source</b>	E.coli
<b>ProteinLength</b>	19-264 a.a.
<b>Form</b>	Tris-based buffer, 50% glycerol.
<b>Molecular Mass</b>	44.4 kDa
<b>AA Sequence</b>	FSGSEATAAILS RAPWSLQSVN PGLKTNSSKEPKFTKCRSPERETF SCHWTDEVHH GTKNLGPIQLFYTR RNTQEWTQEWKECPDYVSAGENSCYFNSSFTSIWIPYCIKLT SNGGTVDEKCF SVD EIVQDPPIALNWT LLNVSLTG I HADIQVRWEAPRNADIQKGWMVLEYELQYKEVNETKWKMMDPILTT SV PVYSLKVDKEYEV RVRSKQRNSGNYGEFSEVLYVTLPQMSQFTCEEDFY
<b>Purity</b>	Greater than 90% as determined by SDS-PAGE.
<b>Storage</b>	The shelf life of liquid form is 6 months at -20 centigrade/-80 centigrade. The shelf life of lyophilized form is 12 months at -20 centigrade/-80 centigrade.

 Tel: 1-631-559-9269 1-516-512-3133

 Email: [info@creative-biomart.com](mailto:info@creative-biomart.com)  Fax: 1-631-938-8127

 45-1 Ramsey Road, Shirley, NY 11967, USA

## GENE INFORMATION

**Gene Name** GHR growth hormone receptor [ Homo sapiens ]

**Official Symbol** GHR

**Synonyms** GHR; growth hormone receptor

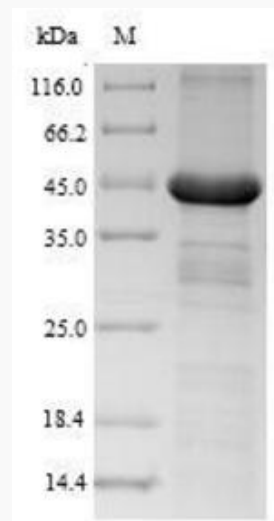
**Gene ID** 2690

**mRNA Refseq** NM\_000163

**Protein Refseq** NP\_000154

**MIM** 600946

**UniProt ID** P10912



 Tel: 1-631-559-9269 1-516-512-3133

 Email: [info@creative-biomart.com](mailto:info@creative-biomart.com)  Fax: 1-631-938-8127

 45-1 Ramsey Road, Shirley, NY 11967, USA