

## Recombinant Rhesus macaque GHR protein, Fc-tagged

Cat. No. GHR-1844R Lot. No. (See product label)

### SPECIFICATION

<b>Product Overview</b>	Recombinant Rhesus macaque GHR (Phe19-Tyr264) protein was fused to human IgG1 Fc tag at C-terminus and expressed in human 293 cells (HEK293).
<b>Species</b>	Rhesus macaque
<b>Source</b>	HEK293
<b>ProteinLength</b>	Phe19-Tyr264
<b>Description</b>	Growth hormone receptor (GHR) is also known as somatotropin receptor, growth hormone-binding protein (GHBR), which belongs to the type I cytokine receptor family or Type 1 subfamily. GHR contains one fibronectin type-III domain. GHR/GHBR is expressed in various tissues with high expression in liver and skeletal muscle. The soluble form (GHBP) is produced by phorbol ester-promoted proteolytic cleavage at the cell surface (shedding) by ADAM17/TACE. GHR is receptor for pituitary gland growth hormone involved in regulating postnatal body growth. On ligand binding, couples to the JAK2/STAT5 pathway. The soluble form (GHBP) acts as a reservoir of growth hormone in plasma and may be a modulator/inhibitor of GH signaling.
<b>Predicted N Terminal</b>	Phe19
<b>Form</b>	Lyophilized from 0.22 µm filtered solution in Tris with Glycine, Arginine and NaCl, pH7.5, 10% trehalose.
<b>Molecular Mass</b>	The protein has a calculated MW of 54.7 kDa. The protein migrates as 66-90 kDa

 Tel: 1-631-559-9269 1-516-512-3133

 Email: [info@creative-biomart.com](mailto:info@creative-biomart.com)  Fax: 1-631-938-8127

 45-1 Ramsey Road, Shirley, NY 11967, USA

under reducing (R) condition (SDS-PAGE) due to glycosylation.

**Endotoxin** Less than 1.0 EU per µg by the LAL method.

**Purity** >90% as determined by SDS-PAGE.

**Storage**

For long term storage, the product should be stored at lyophilized state at -20 centigrade or lower.

Please avoid repeated freeze-thaw cycles.

This product is stable after storage at:

- 20 to -70 centigrade for 12 months in lyophilized state;
- 70 centigrade for 3 months under sterile conditions after reconstitution.

**Reconstitution** It is recommended that sterile water be added to the vial to prepare a stock solution of 0.2 ug/ul. Centrifuge the vial at 4°C before opening to recover the entire contents.

## GENE INFORMATION

**Gene Name** GHR

**Official Symbol** GHR

**Gene ID** 697986

**mRNA Refseq** [NM\\_001042667.1](#)

**Protein Refseq** [NP\\_001036132.1](#)

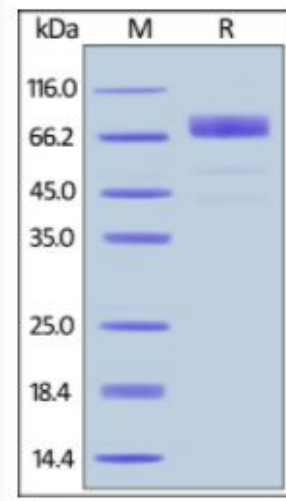
**UniProt ID** [P79194](#)

 Tel: 1-631-559-9269 1-516-512-3133

 Email: [info@creative-biomart.com](mailto:info@creative-biomart.com)  Fax: 1-631-938-8127

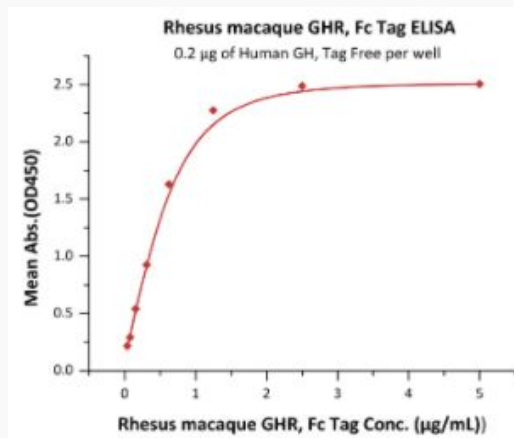
 45-1 Ramsey Road, Shirley, NY 11967, USA

**SDS-PAGE of GHR-1844R**



Rhesus macaque GHR, Fc Tag on SDS-PAGE under reducing (R) condition. The gel was stained overnight with Coomassie Blue. The purity of the protein is greater than 90%.

**Bioactivity-ELISA of GHR-1844R**



Immobilized Human GH, Tag Free at 2 µg/mL (100 µL/well) can bind Rhesus macaque GHR, Fc Tag with a linear range of 0.039-0.625 µg/mL (QC tested).

Tel: 1-631-559-9269 1-516-512-3133

Email: [info@creative-biomart.com](mailto:info@creative-biomart.com) Fax: 1-631-938-8127

45-1 Ramsey Road, Shirley, NY 11967, USA