

Recombinant Human GHR protein, Fc-tagged

Cat. No. GHR-451H Lot. No. (See product label)

SPECIFICATION

Product Overview	Recombinant Human GHR protein (Ala27-Tyr264), fused to human IgG1 Fc tag at C-terminus, was expressed in human 293 cells (HEK293).
Species	Human
Source	HEK293
ProteinLength	238
Description	<p>Growth hormone receptor (GHR) is also known as somatotropin receptor, growth hormone-binding protein (GHBR), which belongs to the type I cytokine receptor family or Type 1 subfamily. GHR contains one fibronectin type-III domain. GHR/GHBR is expressed in various tissues with high expression in liver and skeletal muscle. The soluble form (GHBP) is produced by phorbol ester-promoted proteolytic cleavage at the cell surface (shedding) by ADAM17/TACE. GHR is receptor for pituitary gland growth hormone involved in regulating postnatal body growth. On ligand binding, couples to the JAK2/STAT5 pathway. The soluble form (GHBP) acts as a reservoir of growth hormone in plasma and may be a modulator/inhibitor of GH signaling.</p>
Form	Lyophilized from 0.22 um filtered solution in PBS, pH7.4, 10% trehalose.
Molecular Mass	The protein has a calculated MW of 54.3 kDa. As a result of glycosylation, the protein migrates as 66-85 kDa under reducing (R) condition, and 135-160 kDa under non-reducing (NR) condition (SDS-PAGE).

 Tel: 1-631-559-9269 1-516-512-3133

 Email: info@creative-biomart.com  Fax: 1-631-938-8127

 45-1 Ramsey Road, Shirley, NY 11967, USA

Endotoxin	Less than 1.0 EU per ug by the LAL method.
Purity	>95% as determined by SDS-PAGE.
Storage	<p>For long term storage, the product should be stored at lyophilized state at -20 centigrade or lower.</p> <p>Please avoid repeated freeze-thaw cycles.</p> <p>This product is stable after storage at:</p> <p>-20 centigrade to -70 centigrade for 12 months in lyophilized state; -70 centigrade for 3 months under sterile conditions after reconstitution.</p>
Reconstitution	It is recommended that sterile water be added to the vial to prepare a stock solution of 0.2 ug/ul. Centrifuge the vial at 4°C before opening to recover the entire contents.

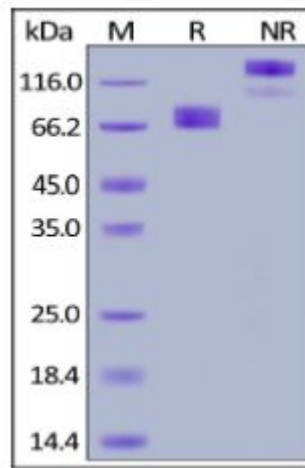
GENE INFORMATION

Gene Name	GHR
Official Symbol	GHR
Synonyms	GHR; growth hormone receptor; GH receptor; serum binding protein; somatotropin receptor; growth hormone binding protein; GHBP
Gene ID	2690
mRNA Refseq	NM_000163
Protein Refseq	NP_000154
MIM	600946

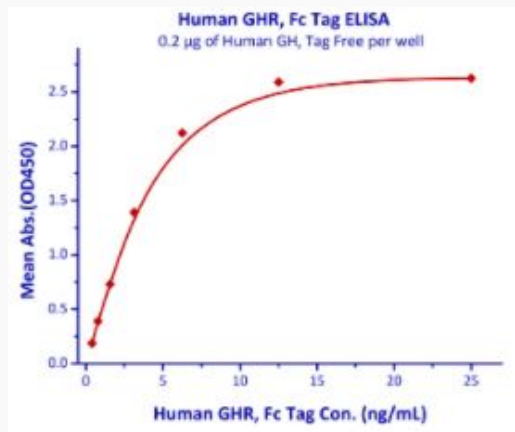
 Tel: 1-631-559-9269 1-516-512-3133

 Email: info@creative-biomart.com  Fax: 1-631-938-8127

 45-1 Ramsey Road, Shirley, NY 11967, USA

UniProt ID
P10912
SDS-PAGE of GHR-451H


Human GHR, Fc Tag on SDS-PAGE under reducing (R) and non-reducing (NR) conditions. The gel was stained overnight with Coomassie Blue. The purity of the protein is greater than 95%.

Bioactivity-ELISA of GHR-451H


Immobilized Human GH, Tag Free at 2 µg/mL (100 µL/well) can bind Human GHR,

Tel: 1-631-559-9269 1-516-512-3133

Email: info@creative-biomart.com Fax: 1-631-938-8127

45-1 Ramsey Road, Shirley, NY 11967, USA



Fc Tag with a linear range of 0.2-3 ng/mL (QC tested).

 Tel: 1-631-559-9269 1-516-512-3133

 Email: info@creative-biomart.com  Fax: 1-631-938-8127

 45-1 Ramsey Road, Shirley, NY 11967, USA