

Recombinant Human GHR Protein, GST-tagged

Cat. No. GHR-4887H **Lot. No.** (See product label)

SPECIFICATION

Product Overview Human GHR partial ORF (NP_000154, 19 a.a. - 118 a.a.) recombinant protein with GST-tag at N-terminal.

Species Human

Source Wheat Germ

Description

This gene encodes a protein that is a transmembrane receptor for growth hormone. Binding of growth hormone to the receptor leads to receptor dimerization and the activation of an intra- and intercellular signal transduction pathway leading to growth. A common alternate allele of this gene, called GHRd3, lacks exon three and has been well-characterized. Mutations in this gene have been associated with Laron syndrome, also known as the growth hormone insensitivity syndrome (GHIS), a disorder characterized by short stature. Other splice variants, including one encoding a soluble form of the protein (GHRtr), have been observed but have not been thoroughly characterized. In humans and rabbits, but not rodents, growth hormone binding protein (GHBP) is generated by proteolytic cleavage of the extracellular ligand-binding domain from the mature growth hormone receptor protein. The precise location of this cleavage site has not been determined for the human protein

Molecular Mass 36.74 kDa

AA Sequence FSGSEATAAILS RAPWSLQSVNPLKTNSSKEPKFTKCRSPERETF SCHWTDEVHH
GTKNLGPIQLFYTRRNTQEW TQEWKECPDYVSAGENSCYFNSSF

 Tel: 1-631-559-9269 1-516-512-3133

 Email: info@creative-biomart.com  Fax: 1-631-938-8127

 45-1 Ramsey Road, Shirley, NY 11967, USA

Applications	Enzyme-linked Immunoabsorbent Assay Western Blot (Recombinant protein) Antibody Production Protein Array
Notes	Best use within three months from the date of receipt of this protein.
Storage	Store at -80 centigrade. Aliquot to avoid repeated freezing and thawing.
Storage Buffer	50 mM Tris-HCl, 10 mM reduced Glutathione, pH=8.0 in the elution buffer.

GENE INFORMATION

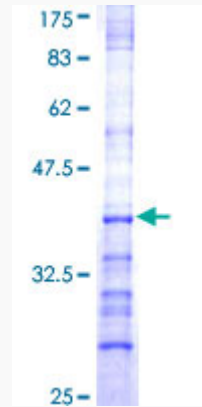
Gene Name	GHR growth hormone receptor [Homo sapiens]
Official Symbol	GHR
Synonyms	GHR; growth hormone receptor; GH receptor; serum binding protein; somatotropin receptor; growth hormone binding protein; GHBP;
Gene ID	2690
mRNA Refseq	NM_000163
Protein Refseq	NP_000154
MIM	600946
UniProt ID	P10912

 Tel: 1-631-559-9269 1-516-512-3133

 Email: info@creative-biomart.com  Fax: 1-631-938-8127

 45-1 Ramsey Road, Shirley, NY 11967, USA

**Quality Control
Testing**



12.5% SDS-PAGE Stained with Coomassie Blue.

 Tel: 1-631-559-9269 1-516-512-3133

 Email: info@creative-biomart.com  Fax: 1-631-938-8127

 45-1 Ramsey Road, Shirley, NY 11967, USA