

Recombinant Human GHRH Protein (Pro21-Leu75), C-Fc tagged

Cat. No. GHRH-2868H Lot. No. (See product label)

SPECIFICATION

Product Overview	Recombinant human GHRH (Pro21-Leu75) protein fused with the C-terminal Fc tag was expressed in Mammalian cells.
Species	Human
Source	Mammalian Cells
ProteinLength	Pro21-Leu75
Molecular Mass	31.05 kDa
Purity	>90 % as determined by SDS-PAGE.
Notes	For research use only.
Storage	Use a manual defrost freezer and avoid repeated freeze thaw cycles. Store at 2 to 8 centigrade for one week. Store at -20 to -80 centigrade for twelve months from the date of receipt.
Storage Buffer	Supplied as solution form in PBS or lyophilized from PBS.
Reconstitution	Reconstitute in sterile water for a stock solution.
Shipping	In general, proteins are provided as lyophilized powder/frozen liquid. They are

 Tel: 1-631-559-9269 1-516-512-3133

 Email: info@creative-biomart.com  Fax: 1-631-938-8127

 45-1 Ramsey Road, Shirley, NY 11967, USA

shipped out with dry ice/blue ice unless customers require otherwise.

GENE INFORMATION

Gene Name	GHRH growth hormone releasing hormone [Homo sapiens (human)]
Official Symbol	GHRH
Synonyms	GHRH; growth hormone releasing hormone; GHRF; somatoliberin; sermorelin; somatocrinin; somatorelin; growth hormone-releasing factor; growth hormone-releasing hormone; GRF; INN; MGC119781;
Gene ID	2691
mRNA Refseq	NM_001184731
Protein Refseq	NP_001171660
MIM	139190
UniProt ID	P01286

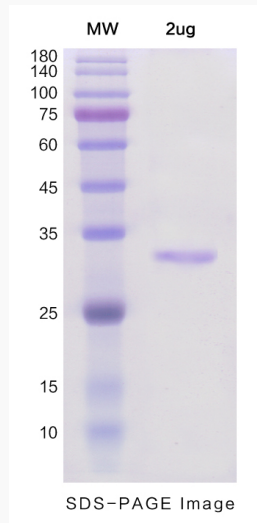
 Tel: 1-631-559-9269 1-516-512-3133

 Email: info@creative-biomart.com  Fax: 1-631-938-8127

 45-1 Ramsey Road, Shirley, NY 11967, USA



SDS-PAGE



Tel: 1-631-559-9269 1-516-512-3133

Email: info@creative-biomart.com Fax: 1-631-938-8127

45-1 Ramsey Road, Shirley, NY 11967, USA