

# Recombinant Human GHRH Protein (Cys19-Gly108), N-GST tagged

Cat. No. GHRH-2869H    Lot. No. (See product label)

## SPECIFICATION

<b>Product Overview</b>	Recombinant human GHRH (Cys19-Gly108) protein fused with the N-GST tag was expressed in E. coli.
<b>Species</b>	Human
<b>Source</b>	E.coli
<b>ProteinLength</b>	Cys19-Gly108
<b>Molecular Mass</b>	37.17 kDa
<b>Purity</b>	>90 % as determined by SDS-PAGE.
<b>Notes</b>	For research use only.
<b>Storage</b>	Use a manual defrost freezer and avoid repeated freeze thaw cycles. Store at 2 to 8 centigrade for one week. Store at -20 to -80 centigrade for twelve months from the date of receipt.
<b>Storage Buffer</b>	0.01M PBS, pH 7.4, 0.02 % NLS
<b>Reconstitution</b>	Reconstitute in sterile water for a stock solution.
<b>Shipping</b>	In general, proteins are provided as lyophilized powder/frozen liquid. They are

 Tel: 1-631-559-9269    1-516-512-3133

 Email: [info@creative-biomart.com](mailto:info@creative-biomart.com)     Fax: 1-631-938-8127

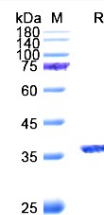
 45-1 Ramsey Road, Shirley, NY 11967, USA

shipped out with dry ice/blue ice unless customers require otherwise.

## GENE INFORMATION

<b>Gene Name</b>	GHRH growth hormone releasing hormone [ Homo sapiens (human) ]
<b>Official Symbol</b>	GHRH
<b>Synonyms</b>	GHRH; growth hormone releasing hormone; GHRF; somatoliberin; sermorelin; somatocrinin; somatorelin; growth hormone-releasing factor; growth hormone-releasing hormone; GRF; INN; MGC119781;
<b>Gene ID</b>	2691
<b>mRNA Refseq</b>	NM_001184731
<b>Protein Refseq</b>	NP_001171660
<b>MIM</b>	139190
<b>UniProt ID</b>	P01286

## SDS-PAGE



Tel: 1-631-559-9269 1-516-512-3133

Email: [info@creative-biomart.com](mailto:info@creative-biomart.com) Fax: 1-631-938-8127

45-1 Ramsey Road, Shirley, NY 11967, USA