

Recombinant Sheep GHRH Protein (1-44 aa), GST-tagged

Cat. No. GHRH-523S Lot. No. (See product label)

SPECIFICATION

Product Overview	Recombinant Sheep GHRH Protein (1-44 aa) is produced by E. coli expression system. This protein is fused with a GST tag at the N-terminal. Protein Description: Full Length.
Species	Sheep
Source	E.coli
ProteinLength	1-44 aa
Description	GRF is released by the hypothalamus and acts on the adenohypophyse to stimulate the secretion of growth hormone.
Form	Tris-based buffer, 50% glycerol
Molecular Mass	32.1 kDa
AA Sequence	YADAIFTNSYRKILGQLSARKLLQDIMNRQQGERNQEQQGAKVRL
Purity	> 90% as determined by SDS-PAGE.
Notes	Repeated freezing and thawing is not recommended. Store working aliquots at 4 centigrade for up to one week.
Storage	The shelf life is related to many factors, storage state, buffer ingredients, storage

 Tel: 1-631-559-9269 1-516-512-3133

 Email: info@creative-biomart.com  Fax: 1-631-938-8127

 45-1 Ramsey Road, Shirley, NY 11967, USA

temperature and the stability of the protein itself. Generally, the shelf life of liquid form is 6 months at -20 centigrade/-80 centigrade. The shelf life of lyophilized form is 12 months at -20 centigrade/-80 centigrade.

Concentration A hardcopy of COA with concentration instruction is sent along with the products.

GENE INFORMATION

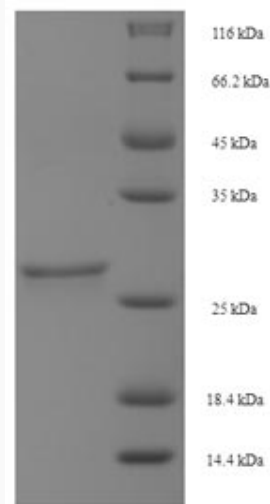
Gene Name GHRH growth hormone releasing hormone [*Ovis aries* (sheep)]

Official Symbol GHRH

Synonyms GRF;

Gene ID 100101237

UniProt ID P07217



 Tel: 1-631-559-9269 1-516-512-3133

 Email: info@creative-biomart.com  Fax: 1-631-938-8127

 45-1 Ramsey Road, Shirley, NY 11967, USA



(Tris-Glycine gel) Discontinuous SDS-PAGE (reduced) with 5% enrichment gel and 15% separation gel.

 Tel: 1-631-559-9269 1-516-512-3133

 Email: info@creative-biomart.com  Fax: 1-631-938-8127

 45-1 Ramsey Road, Shirley, NY 11967, USA