

Recombinant Human GHRHR Protein, GST-tagged

Cat. No. GHRHR-4891H Lot. No. (See product label)

SPECIFICATION

Product Overview	Human GHRHR partial ORF (NP_000814, 23 a.a. - 132 a.a.) recombinant protein with GST-tag at N-terminal.
Species	Human
Source	Wheat Germ
Description	This gene, expressed in the pituitary, encodes a receptor for growth hormone-releasing hormone. Binding of this hormone to the receptor leads to synthesis and release of growth hormone. Mutations in this gene have been associated with isolated growth hormone deficiency (IGHD), also known as Dwarfism of Sindh, a disorder characterized by short stature. Many alternate transcriptional splice variants encoding different isoforms have been described, but only two have been characterized to date. [provided by RefSeq]
Molecular Mass	37.84 kDa
AA Sequence	HMHPECDFITQLREDESACLQAAEEMPNTTLGCPATWDGLLCWPTAGSGEWVTLPCPDFFSHFSSSESGAVKRDCTITGWSEFPFPYPVACPVPLELLAAEEESYFSTVKII
Applications	Enzyme-linked Immunoabsorbent Assay Western Blot (Recombinant protein) Antibody Production Protein Array

 Tel: 1-631-559-9269 1-516-512-3133

 Email: info@creative-biomart.com  Fax: 1-631-938-8127

 45-1 Ramsey Road, Shirley, NY 11967, USA

Notes	Best use within three months from the date of receipt of this protein.
Storage	Store at -80 centigrade. Aliquot to avoid repeated freezing and thawing.
Storage Buffer	50 mM Tris-HCl, 10 mM reduced Glutathione, pH=8.0 in the elution buffer.

GENE INFORMATION

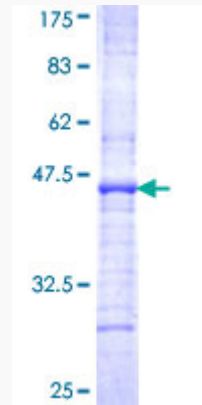
Gene Name	GHRHR growth hormone releasing hormone receptor [Homo sapiens]
Official Symbol	GHRHR
Synonyms	GHRHR; growth hormone releasing hormone receptor; growth hormone-releasing hormone receptor; GRF receptor; GHRH receptor; GRFR; GHRFR; IGHD1B;
Gene ID	2692
mRNA Refseq	NM_000823
Protein Refseq	NP_000814
MIM	139191
UniProt ID	Q02643

 Tel: 1-631-559-9269 1-516-512-3133

 Email: info@creative-biomart.com  Fax: 1-631-938-8127

 45-1 Ramsey Road, Shirley, NY 11967, USA

**Quality Control
Testing**



12.5% SDS-PAGE Stained with Coomassie Blue.

 Tel: 1-631-559-9269 1-516-512-3133

 Email: info@creative-biomart.com  Fax: 1-631-938-8127

 45-1 Ramsey Road, Shirley, NY 11967, USA