

Recombinant Human GHRL Protein, His-tagged

Cat. No. GHRL-2203H Lot. No. (See product label)

SPECIFICATION

Product Overview Recombinant Human GHRL Protein (Ser25-Lys117) with a N-His tag was expressed in E. coli.

Species Human

Source E.coli

ProteinLength Ser25-Lys117

Description

This gene encodes the ghrelin-obestatin preproprotein that is cleaved to yield two peptides, ghrelin and obestatin. Ghrelin is a powerful appetite stimulant and plays an important role in energy homeostasis. Its secretion is initiated when the stomach is empty, whereupon it binds to the growth hormone secretagogue receptor in the hypothalamus which results in the secretion of growth hormone (somatotropin). Ghrelin is thought to regulate multiple activities, including hunger, reward perception via the mesolimbic pathway, gastric acid secretion, gastrointestinal motility, and pancreatic glucose-stimulated insulin secretion. It was initially proposed that obestatin plays an opposing role to ghrelin by promoting satiety and thus decreasing food intake, but this action is still debated. Recent reports suggest multiple metabolic roles for obestatin, including regulating adipocyte function and glucose metabolism. Alternative splicing results in multiple transcript variants. In addition, antisense transcripts for this gene have been identified and may potentially regulate ghrelin-obestatin preproprotein expression.

 Tel: 1-631-559-9269 1-516-512-3133

 Email: info@creative-biomart.com  Fax: 1-631-938-8127

 45-1 Ramsey Road, Shirley, NY 11967, USA



Form	Freeze-dried powder
Molecular Mass	Predicted Molecular Mass: 11.6 kDa Accurate Molecular Mass: 11 kDa
Endotoxin	<1.0 EU per 1g (determined by the LAL method).
Purity	> 97%
Applications	Positive Control; Immunogen; SDS-PAGE; WB.
Stability	The thermal stability is described by the loss rate. The loss rate was determined by accelerated thermal degradation test, that is, incubate the protein at 37 centigrade for 48h, and no obvious degradation and precipitation were observed. The loss rate is less than 5% within the expiration date under appropriate storage condition.
Storage	Avoid repeated freeze/thaw cycles. Store at 2-8 centigrade for one month. Aliquot and store at -80 centigrade for 12 months.
Storage Buffer	20mM Tris, 150mM NaCl, pH8.0, containing 1mM EDTA, 1mM DTT, 0.01% SKL, 5% Trehalose and Proclin300.
Reconstitution	Reconstitute in 20mM Tris, 150mM NaCl (pH8.0) to a concentration of 0.1-1.0 mg/mL. Do not vortex.

GENE INFORMATION

Gene Name	GHRL ghrelin/obestatin prepropeptide [Homo sapiens (human)]
Official Symbol	GHRL

Tel: 1-631-559-9269 1-516-512-3133

Email: info@creative-biomart.com Fax: 1-631-938-8127

45-1 Ramsey Road, Shirley, NY 11967, USA

Synonyms GHRL; ghrelin/obestatin prepropeptide; ghrelin, growth hormone secretagogue receptor ligand; appetite-regulating hormone; ghrelin; MTLRP; obestatin; motilin-related peptide; growth hormone secretagogue; ghrelin/obestatin preprohormone; growth hormone-releasing peptide;

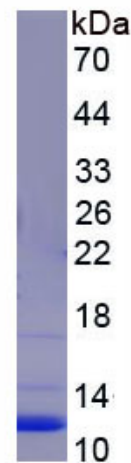
Gene ID [51738](#)

mRNA Refseq [NM_001134941](#)

Protein Refseq [NP_001128413](#)

MIM [605353](#)

UniProt ID [Q9UBU3](#)



 Tel: 1-631-559-9269 1-516-512-3133

 Email: info@creative-biomart.com  Fax: 1-631-938-8127

 45-1 Ramsey Road, Shirley, NY 11967, USA