

Recombinant Human ghrelin/obestatin prepropeptide Protein, His&Flag tagged

Cat. No. GHRL-220H Lot. No. (See product label)

SPECIFICATION

Product Overview

Recombinant human GHRL protein (Q9UBU3) (Gly 24-Lys 117) with both His, Flag tag at the C-terminus was expressed in HEK293.

Species

Human

Source

HEK293

ProteinLength

24-117aa

Description

This gene encodes the ghrelin-obestatin preproprotein that is cleaved to yield two peptides, ghrelin and obestatin. Ghrelin is a powerful appetite stimulant and plays an important role in energy homeostasis. Its secretion is initiated when the stomach is empty, whereupon it binds to the growth hormone secretagogue receptor in the hypothalamus which results in the secretion of growth hormone (somatotropin). Ghrelin is thought to regulate multiple activities, including hunger, reward perception via the mesolimbic pathway, gastric acid secretion, gastrointestinal motility, and pancreatic glucose-stimulated insulin secretion. It was initially proposed that obestatin plays an opposing role to ghrelin by promoting satiety and thus decreasing food intake, but this action is still debated. Recent reports suggest multiple metabolic roles for obestatin, including regulating adipocyte function and glucose metabolism. Alternative splicing results in multiple transcript variants. In addition, antisense transcripts for this gene have been identified and may potentially regulate ghrelin-obestatin preproprotein expression.

 Tel: 1-631-559-9269 1-516-512-3133

 Email: info@creative-biomart.com  Fax: 1-631-938-8127

 45-1 Ramsey Road, Shirley, NY 11967, USA

Tag	C-His&Flag
Molecular Mass	13.2 kDa
Endotoxin	Less than 1.0 EU/μg by the LAL method.
Purity	>95% as determined by SDS-PAGE.
Storage	Please avoid repeated freeze-thaw cycles. Samples are stable for up to twelve months from date of receipt at -20 to -80 centigrade. It is recommended that aliquot the reconstituted solution to minimize freeze-thaw cycles.
Storage Buffer	Lyophilized from a 0.2 μm filtered solution of PBS, pH7.4, 5% Trehalose, 5% mannitol.
Reconstitution	Reconstitute at 250 μg/mL in sterile water.
GENE INFORMATION	
Gene Name	GHRL ghrelin/obestatin prepropeptide [Homo sapiens (human)]
Official Symbol	GHRL
Synonyms	GHRL; ghrelin/obestatin prepropeptide; ghrelin, growth hormone secretagogue receptor ligand; appetite-regulating hormone; ghrelin; MTLRP; obestatin; motilin-related peptide; growth hormone secretagogue; ghrelin/obestatin preprohormone; growth hormone-releasing peptide;
Gene ID	51738
mRNA Refseq	NM_001134941

 Tel: 1-631-559-9269 1-516-512-3133

 Email: info@creative-biomart.com  Fax: 1-631-938-8127

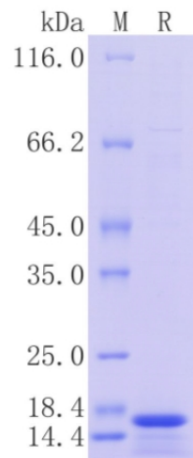
 45-1 Ramsey Road, Shirley, NY 11967, USA

Protein Refseq NP_001128413

MIM 605353

UniProt ID Q9UBU3

Protein on SDS-PAGE under reducing (R) condition.



 Tel: 1-631-559-9269 1-516-512-3133

 Email: info@creative-biomart.com  Fax: 1-631-938-8127

 45-1 Ramsey Road, Shirley, NY 11967, USA