

# Recombinant Human GHRL Protein, Myc/DDK-tagged, C13 and N15-labeled

**Cat. No.** GHRL-4132H    **Lot. No.** (See product label)

## SPECIFICATION

### Product Overview

GHRL MS Standard C13 and N15-labeled recombinant protein (NP\_057446) with a C-terminal MYC/DDK tag, was expressed in HEK293 cells.

### Species

Human

### Source

HEK293

### Description

This gene encodes the ghrelin-obestatin preproprotein that is cleaved to yield two peptides, ghrelin and obestatin. Ghrelin is a powerful appetite stimulant and plays an important role in energy homeostasis. Its secretion is initiated when the stomach is empty, whereupon it binds to the growth hormone secretagogue receptor in the hypothalamus which results in the secretion of growth hormone (somatotropin). Ghrelin is thought to regulate multiple activities, including hunger, reward perception via the mesolimbic pathway, gastric acid secretion, gastrointestinal motility, and pancreatic glucose-stimulated insulin secretion. It was initially proposed that obestatin plays an opposing role to ghrelin by promoting satiety and thus decreasing food intake, but this action is still debated. Recent reports suggest multiple metabolic roles for obestatin, including regulating adipocyte function and glucose metabolism. Alternative splicing results in multiple transcript variants. In addition, antisense transcripts for this gene have been identified and may potentially regulate ghrelin-obestatin preproprotein expression.

### Molecular Mass

12.9 kDa

 Tel: 1-631-559-9269    1-516-512-3133

 Email: [info@creative-biomart.com](mailto:info@creative-biomart.com)     Fax: 1-631-938-8127

 45-1 Ramsey Road, Shirley, NY 11967, USA



<b>AA Sequence</b>	MPSPGTVCSLLLLGMLWDLAMAGSSFLSPEHQRVQQRKESKKPPAKLQPRALAG WLRPEDGGQAEGAEMEVRFNAPFDVGIKLSGVQYQQHSQALGKFLQDILWEEA KEAPADKTRTRPLEQKLISEEDLAANDILDYKDDDDKV
<b>Purity</b>	> 80% as determined by SDS-PAGE and Coomassie blue staining
<b>Stability</b>	Stable for 3 months from receipt of products under proper storage and handling conditions.
<b>Storage</b>	Store at -80 centigrade. Avoid repeated freeze-thaw cycles.
<b>Concentration</b>	50 µg/mL as determined by BCA
<b>Storage Buffer</b>	100 mM glycine, 25 mM Tris-HCl, pH 7.3.

## GENE INFORMATION

<b>Gene Name</b>	GHRL ghrelin/obestatin prepropeptide [ Homo sapiens (human) ]
<b>Official Symbol</b>	GHRL
<b>Synonyms</b>	GHRL; ghrelin/obestatin prepropeptide; ghrelin, growth hormone secretagogue receptor ligand; appetite-regulating hormone; ghrelin; MTLRP; obestatin; motilin-related peptide; growth hormone secretagogue; ghrelin/obestatin preprohormone; growth hormone-releasing peptide;
<b>Gene ID</b>	51738
<b>mRNA Refseq</b>	NM_016362
<b>Protein Refseq</b>	NP_057446

Tel: 1-631-559-9269 1-516-512-3133

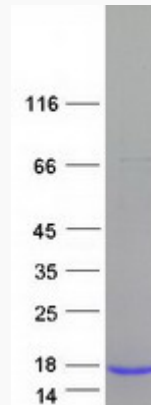
Email: [info@creative-biomart.com](mailto:info@creative-biomart.com) Fax: 1-631-938-8127

45-1 Ramsey Road, Shirley, NY 11967, USA

**MIM** 605353

**UniProt ID** Q9UBU3

**SDS-PAGE**



 Tel: 1-631-559-9269 1-516-512-3133

 Email: [info@creative-biomart.com](mailto:info@creative-biomart.com)  Fax: 1-631-938-8127

 45-1 Ramsey Road, Shirley, NY 11967, USA