

Recombinant Human GHRL Protein, GST-tagged

Cat. No. GHRL-4892H Lot. No. (See product label)

SPECIFICATION

Product Overview	Human GHRL full-length ORF (AAH25791.1, 1 a.a. - 117 a.a.) recombinant protein with GST-tag at N-terminal.
Species	Human
Source	Wheat Germ
Description	<p>This gene encodes ghrelin-obestatin preproprotein, which generates ghrelin and obestatin. Ghrelin is an endogenous ligand for the growth hormone secretagogue receptor and is involved in regulating growth hormone release. Obestatin was initially reported to be an endogenous ligand for the orphan G protein-coupled receptor GPR39 and was involved in satiety and decreased food intake; however, these findings are controversial. Recent reports show that obestatin is involved in inhibiting thirst and anxiety, improving memory, regulating sleep, affecting cell proliferation, and increasing the secretion of pancreatic juice enzymes. Alternative promoters and alternative splicing result in multiple transcript variants, some of which encode different protein isoforms and some of which do not encode a protein but may regulate the ghrelin-obestatin preproprotein expression. In addition, antisense transcripts for this gene have been identified and may also function in regulation of the ghrelin-obestatin preproprotein expression. [provided by RefSeq</p>
Molecular Mass	38.61 kDa
AA Sequence	MPSPGTVCSLLLLGMLWLDLAMAGSSFLSPEHQRVQQRKESKKPPAKLQPRALAG

 Tel: 1-631-559-9269 1-516-512-3133

 Email: info@creative-biomart.com  Fax: 1-631-938-8127

 45-1 Ramsey Road, Shirley, NY 11967, USA

WLRPEDGGQAEGAEDEMEVRFNAPFDVGIKLSGVQYQQHSQALGKFLQDILWEEA
KEAPADK

Applications
Enzyme-linked Immunoabsorbent Assay
Western Blot (Recombinant protein)
Antibody Production
Protein Array

Notes
Best use within three months from the date of receipt of this protein.

Storage
Store at -80 centigrade. Aliquot to avoid repeated freezing and thawing.

Storage Buffer
50 mM Tris-HCl, 10 mM reduced Glutathione, pH=8.0 in the elution buffer.

GENE INFORMATION

Gene Name
[GHRL ghrelin/obestatin prepropeptide \[Homo sapiens \]](#)

Official Symbol
[GHRL](#)

Synonyms
GHRL; ghrelin/obestatin prepropeptide; ghrelin, growth hormone secretagogue receptor ligand; appetite-regulating hormone; ghrelin; MTLRP; obestatin; motilin-related peptide; growth hormone secretagogue; ghrelin/obestatin preprohormone; growth hormone-releasing peptide;

Gene ID
[51738](#)

mRNA Refseq
[NM_001134941](#)

Protein Refseq
[NP_001128413](#)

 Tel: 1-631-559-9269 1-516-512-3133

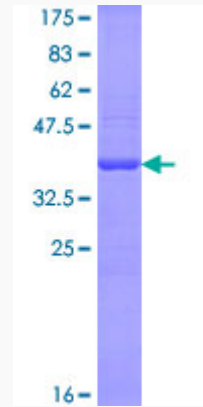
 Email: info@creative-biomart.com  Fax: 1-631-938-8127

 45-1 Ramsey Road, Shirley, NY 11967, USA

MIM 605353

UniProt ID Q9UBU3

**Quality Control
Testing**



12.5% SDS-PAGE Stained with Coomassie Blue.

 Tel: 1-631-559-9269 1-516-512-3133

 Email: info@creative-biomart.com  Fax: 1-631-938-8127

 45-1 Ramsey Road, Shirley, NY 11967, USA