

Recombinant Cat GHRL protein(24-51aa), His-KSI-tagged

Cat. No. GHRL-7597C Lot. No. (See product label)

SPECIFICATION

Product Overview	Recombinant Cat GHRL protein(Q6BEG6)(24-51aa), fused with N-terminal His and KSI tag, was expressed in E.coli.
Species	Cat
Source	E.coli
ProteinLength	24-51aa
Form	If the delivery form is liquid, the default storage buffer is Tris/PBS-based buffer, 5%-50% glycerol. If the delivery form is lyophilized powder, the buffer before lyophilization is Tris/PBS-based buffer, 6% Trehalose, pH 8.0.
Molecular Mass	18.5 kDa
Purity	Greater than 85% as determined by SDS-PAGE.
Storage	Store at -20°C/-80°C upon receipt, aliquoting is necessary for mutiple use. Avoid repeated freeze-thaw cycles.
Reconstitution	We recommend that this vial be briefly centrifuged prior to opening to bring the contents to the bottom. Please reconstitute protein in deionized sterile water to a concentration of 0.1-1.0 mg/mL. We recommend to add 5-50% of glycerol (final concentration) and aliquot for long-term storage at -20°C/-80°C.

 Tel: 1-631-559-9269 1-516-512-3133

 Email: info@creative-biomart.com  Fax: 1-631-938-8127

 45-1 Ramsey Road, Shirley, NY 11967, USA

AA Sequence GSSFLSPEHQKVQQRKESKKPPAKLQPR

GENE INFORMATION

Gene Name GHRL ghrelin/obestatin prepropeptide [*Felis catus*]

Official Symbol GHRL

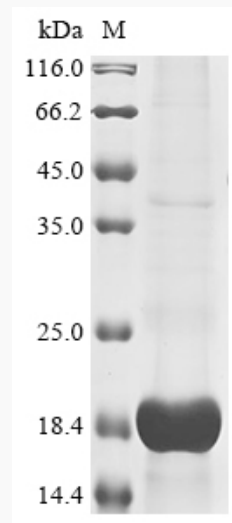
Synonyms GHRL; ghrelin/obestatin prepropeptide; appetite-regulating hormone; ghrelin; motilin-related peptide; growth hormone secretagogue; growth hormone-releasing peptide;

Gene ID 493844

mRNA Refseq NM_001009853

Protein Refseq NP_001009853

SDS-PAGE



 Tel: 1-631-559-9269 1-516-512-3133

 Email: info@creative-biomart.com  Fax: 1-631-938-8127

 45-1 Ramsey Road, Shirley, NY 11967, USA