

Recombinant Human GID4 Protein, Myc/DDK-tagged, C13 and N15-labeled

Cat. No. GID4-4552H **Lot. No.** (See product label)

SPECIFICATION

Product Overview	C17orf39 MS Standard C13 and N15-labeled recombinant protein (NP_076957) with a C-terminal MYC/DDK tag, was expressed in HEK293 cells.
Species	Human
Source	HEK293
Description	The multiprotein Mediator complex is a coactivator required for activation of RNA polymerase II transcription by DNA bound transcription factors. The protein encoded by this gene is thought to be a subunit of the Mediator complex. This gene is located within the Smith-Magenis syndrome region on chromosome 17.
Molecular Mass	33.5 kDa
AA Sequence	MCARGQVGRGTQLRTGRPCSQVPGSRWRPERLLRRQRAGGRPSRPHPARARPG LSLPATLLGSRAAAVPLPLPPALAPGDPAMPVRTECPPPAGASAASAASLIPPPIN TQQPGVATSLLYSGSKFRGHQKSKGNSYDVEVVLQHVDTGNSYLCGYLKIKGLTEE YPTLTTFFEGEIISSKHPFLTRKWDATEDVDRKHWGKFLAFYQYAKSFNSDDFDYEE LKNGDYVFMRWKEQFLVPDHTIKDISGASFAGFYICFQKSAASIEGYYYHRSSEWY QSLNLTHVPEHSAPIYEFRTTRTRPLEQKLISEEDLAANDILDYKDDDDKV
Purity	> 80% as determined by SDS-PAGE and Coomassie blue staining
Stability	Stable for 3 months from receipt of products under proper storage and handling

 Tel: 1-631-559-9269 1-516-512-3133

 Email: info@creative-biomart.com  Fax: 1-631-938-8127

 45-1 Ramsey Road, Shirley, NY 11967, USA

conditions.

Storage Store at -80 centigrade. Avoid repeated freeze-thaw cycles.

Concentration 50 µg/mL as determined by BCA

Storage Buffer 100 mM glycine, 25 mM Tris-HCl, pH 7.3.

GENE INFORMATION

Gene Name [GID4 GID complex subunit 4 homolog \[Homo sapiens \(human\) \]](#)

Official Symbol [GID4](#)

Synonyms GID4; GID complex subunit 4 homolog; VID2; VID24; C17orf39; glucose-induced degradation protein 4 homolog; GID complex subunit 4, VID24 homolog; vacuolar import and degradation 24; vacuolar import and degradation protein 24 homolog

Gene ID [79018](#)

mRNA Refseq [NM_024052](#)

Protein Refseq [NP_076957](#)

MIM [617699](#)

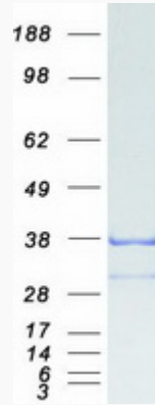
UniProt ID [Q8IVV7](#)

 Tel: 1-631-559-9269 1-516-512-3133

 Email: info@creative-biomart.com  Fax: 1-631-938-8127

 45-1 Ramsey Road, Shirley, NY 11967, USA

SDS-PAGE



 Tel: 1-631-559-9269 1-516-512-3133

 Email: info@creative-biomart.com  Fax: 1-631-938-8127

 45-1 Ramsey Road, Shirley, NY 11967, USA