

Recombinant Human GID8 Protein, Myc/DDK-tagged, C13 and N15-labeled

Cat. No. GID8-4658H **Lot. No.** (See product label)

SPECIFICATION

Product Overview	C20orf11 MS Standard C13 and N15-labeled recombinant protein (NP_060366) with a C-terminal MYC/DDK tag, was expressed in HEK293 cells.
Species	Human
Source	HEK293
Description	GID8 (GID Complex Subunit 8 Homolog) is a Protein Coding gene. Diseases associated with GID8 include Lissencephaly and Lissencephaly 1. An important paralog of this gene is RANBP9.
Molecular Mass	26.8 kDa
AA Sequence	MSYAEKPDEITKDEWMEKLNHLVQRADMNRLIMNYLVTEGFKEAAEKFRMESGIE PSLDLETLDERIKIREMILKGQIQEAIALINSLHPELLDTNRYLYFHLQQQHLLIELIRQRE TEAALEFAQTQLAEQGEESRECLTEMERTLALLAFDSPEESPFGDLLHTMQRQKVV SEVNQAVLDYENRESTPKLAKLLKLLLWAQNELDQKKVKYPKMTDLSKGVIEEPKTR TRPLEQKLISEEDLAANDILDYKDDDDKV
Purity	> 80% as determined by SDS-PAGE and Coomassie blue staining
Stability	Stable for 3 months from receipt of products under proper storage and handling conditions.

 Tel: 1-631-559-9269 1-516-512-3133

 Email: info@creative-biomart.com  Fax: 1-631-938-8127

 45-1 Ramsey Road, Shirley, NY 11967, USA

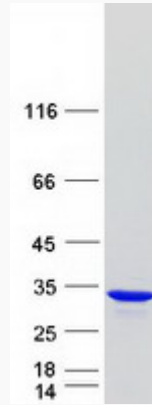
Storage	Store at -80 centigrade. Avoid repeated freeze-thaw cycles.
Concentration	50 µg/mL as determined by BCA
Storage Buffer	100 mM glycine, 25 mM Tris-HCl, pH 7.3.
GENE INFORMATION	
Gene Name	GID8 GID complex subunit 8 homolog [Homo sapiens (human)]
Official Symbol	GID8
Synonyms	GID8; GID complex subunit 8 homolog; TWA1; C20orf11; glucose-induced degradation protein 8 homolog; protein C20orf11; two hybrid associated protein No. 1 with RanBPM; two hybrid-associated protein 1 with RanBPM
Gene ID	54994
mRNA Refseq	NM_017896
Protein Refseq	NP_060366
MIM	611625
UniProt ID	Q9NWU2

 Tel: 1-631-559-9269 1-516-512-3133

 Email: info@creative-biomart.com  Fax: 1-631-938-8127

 45-1 Ramsey Road, Shirley, NY 11967, USA

SDS-PAGE



 Tel: 1-631-559-9269 1-516-512-3133

 Email: info@creative-biomart.com  Fax: 1-631-938-8127

 45-1 Ramsey Road, Shirley, NY 11967, USA