

Recombinant Human GIF Protein (Met1-Tyr417), C-His tagged, Animal-free, Carrier-free

Cat. No. GIF-121H Lot. No. (See product label)

SPECIFICATION

Product Overview	Recombinant Human GIF Protein (Met1-Tyr417) with C-His tag was expressed in E. coli and Animal-free as well as Carrier-free.
Species	Human
Source	E.coli
ProteinLength	Met1-Tyr417
Description	Human Gastric intrinsic factor (GIF) is an intrinsic factor of the eukaryotic cobalamin family. Gastric intrinsic factor is a 44 kDa protein containing 380 amino acid residues. It is secreted from the parietal cells in gastric mucosa. Gastric intrinsic factor plays a major role in absorption and transportation of cobalamin and Cbl. It could form the complex with Vit.B12 that avoid the destroy of Vit.B12.
Form	Lyophilized
Molecular Mass	The protein has a calculated MW of 46.23 kDa. The protein migrates as 45 kDa under reducing condition (SDS-PAGE analysis).
Endotoxin	< 0.1 EU/μg of the protein by the LAL method.
Purity	>98% as determined by SDS-PAGE analysis.

 Tel: 1-631-559-9269 1-516-512-3133

 Email: info@creative-biomart.com  Fax: 1-631-938-8127

 45-1 Ramsey Road, Shirley, NY 11967, USA



Storage	This product is stable after storage at: -20 centigrade for 12 months in lyophilized state from date of receipt. -20 or -80 centigrade for 1 month under sterile conditions after reconstitution. Avoid repeated freeze/thaw cycles.
Storage Buffer	Lyophilized from a 0.2 µm filtered solution of PBS, pH 8.0.
Reconstitution	It is recommended to reconstitute the lyophilized protein in sterile H2O to a concentration not less than 200 µg/mL and incubate the stock solution for at least 20 min to ensure sufficient re-dissolved.
Shipping	The product is shipped with polar packs. Upon receipt, store it immediately at -20 centigrade or lower for long term storage.

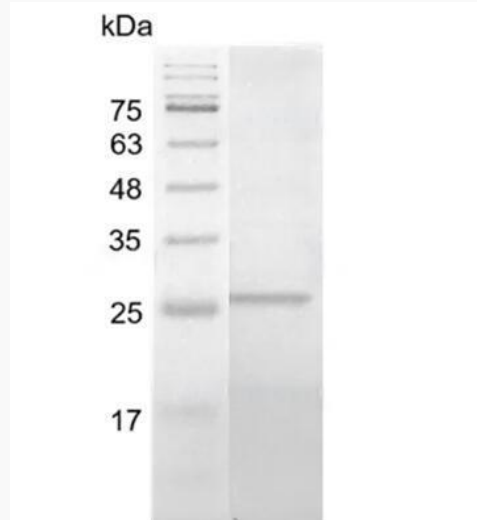
GENE INFORMATION

Gene Name	GIF gastric intrinsic factor (vitamin B synthesis) [Homo sapiens (human)]
Official Symbol	GIF
Synonyms	GIF; gastric intrinsic factor (vitamin B synthesis); gastric intrinsic factor; IF; IFMH; INF; TCN3; intrinsic factor;
Gene ID	2694
mRNA Refseq	NM_005142
Protein Refseq	NP_005133
MIM	609342

UniProt ID

P27352

**SDS-PAGE analysis
of recombinant
human GIF.**



 Tel: 1-631-559-9269 1-516-512-3133

 Email: info@creative-biomart.com  Fax: 1-631-938-8127

 45-1 Ramsey Road, Shirley, NY 11967, USA