

Recombinant Human GIF Protein, GST-tagged

Cat. No. GIF-4896H Lot. No. (See product label)

SPECIFICATION

Product Overview	Human GIF full-length ORF (NP_005133.2, 1 a.a. - 417 a.a.) recombinant protein with GST-tag at N-terminal.
Species	Human
Source	Wheat Germ
Description	This gene is a member of the cobalamin transport protein family. It encodes a glycoprotein secreted by parietal cells of the gastric mucosa and is required for adequate absorption of vitamin B12. Vitamin B12 is necessary for erythrocyte maturation and mutations in this gene may lead to congenital pernicious anemia. [provided by RefSeq]
Molecular Mass	71.8 kDa
AA Sequence	MAWFALYLLSLLWATAGTSTQTQSSCSVPSAQEPLVNGIQVLMENSVTSSAYPNPSI LIAMNLAGAYNLKAQKLLTYQLMSSDNDLTIGQLGLTIMALTSSCRDPGDKVSILQR QMENWAPSSPNAEASAFYGPSLAILALCQKNSEATLPIAVRFAKTLLANSSPFNVDT GAMATLALTCMYNKIPVVGSEEGYRSLFGQVLKDIVKISMKIKDNGIIGDIYSTGLAMQ ALSVTPEPSKKEWNCKKTTDMILNEIKQGKFHNPMASIAQILPSLKGKTYLDVPQVTCS PDHEVQPTLPSNPGPGPTSASNITVIYTINNQLRGVELLFNETINVSVKSGSVLLVLE EAQRKNPMFKFETTMTSWGLVSSINNIAENVNHKTYWQFLSGVTPLNEGVADYIPF NHEHITANFTQY
Applications	Enzyme-linked Immunoabsorbent Assay

 Tel: 1-631-559-9269 1-516-512-3133

 Email: info@creative-biomart.com  Fax: 1-631-938-8127

 45-1 Ramsey Road, Shirley, NY 11967, USA

Western Blot (Recombinant protein)
 Antibody Production
 Protein Array

Notes	Best use within three months from the date of receipt of this protein.
Storage	Store at -80 centigrade. Aliquot to avoid repeated freezing and thawing.
Storage Buffer	50 mM Tris-HCl, 10 mM reduced Glutathione, pH=8.0 in the elution buffer.

GENE INFORMATION

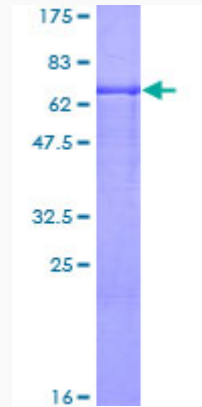
Gene Name	GIF gastric intrinsic factor (vitamin B synthesis) [Homo sapiens]
Official Symbol	GIF
Synonyms	GIF; gastric intrinsic factor (vitamin B synthesis); gastric intrinsic factor; IF; IFMH; INF; TCN3; intrinsic factor;
Gene ID	2694
mRNA Refseq	NM_005142
Protein Refseq	NP_005133
MIM	609342
UniProt ID	P27352

 Tel: 1-631-559-9269 1-516-512-3133

 Email: info@creative-biomart.com  Fax: 1-631-938-8127

 45-1 Ramsey Road, Shirley, NY 11967, USA

**Quality Control
Testing**



12.5% SDS-PAGE Stained with Coomassie Blue.

 Tel: 1-631-559-9269 1-516-512-3133

 Email: info@creative-biomart.com  Fax: 1-631-938-8127

 45-1 Ramsey Road, Shirley, NY 11967, USA