

Recombinant Human GIGYF2 Protein (510-1030 aa), His-tagged

Cat. No. GIGYF2-1677H Lot. No. (See product label)

SPECIFICATION

Product Overview	Recombinant Human GIGYF2 Protein (510-1030 aa) is produced by Yeast expression system. This protein is fused with a 6xHis tag at the N-terminal. Research Area: Signal Transduction. Protein Description: Partial.
Species	Human
Source	Yeast
ProteinLength	510-1030 aa
Description	May act cooperatively with GRB10 to regulate tyrosine kinase receptor signaling, including IGF1 and insulin receptors.
Form	Tris-based buffer,50% glycerol
Molecular Mass	64.6 kDa
AA Sequence	<pre> ERLASKLQEHRACGVSIPLMHEAMQKWYYKDPQGEIQGPFNNQEMAEWFQAGYFT MSLLVKRACDESFQPLGDIMKMWGRVPFSPGPAPPPHMGELDQERLTRQQELTAL YQMQLQYQQFLIQQYAQVLAQQQKAALSSQQQQQLALLLQQFQTLKMRISDQNI IPSVTRSVSVPDTGSIWELQPTASQPTVWEGGSVWDLPLDTTTPGPALEQLQQLEK AKAAKLEQERREAEMRAKREEEERKRQEELRRQQEEILRRQQEEERKRREEEELA RRKQEEALRRQREQEIALRRQREEEERQQQEEALRRLEERRREEEERRKQEELLR KQEEEAAKWAREEEEAQRRLEENRLRMEEEAARLRHEEEERKRKELEVQRQKELM RQRQQQQEALRRLQQQQQQQLAQMKLPSSTWGQQSNTTACQSQATLSLAEIQ </pre>

 Tel: 1-631-559-9269 1-516-512-3133

 Email: info@creative-biomart.com  Fax: 1-631-938-8127

 45-1 Ramsey Road, Shirley, NY 11967, USA

KLEEEERERQLREEQRRQQRELMKALQQQQQQQQKLSGWGNVSKPSGTTKSLLEI
 QQEEARQMQKQQQQQQQHQQPNRAR

Purity > 90% as determined by SDS-PAGE.

Notes Repeated freezing and thawing is not recommended. Store working aliquots at 4 centigrade for up to one week.

Storage The shelf life is related to many factors, storage state, buffer ingredients, storage temperature and the stability of the protein itself. Generally, the shelf life of liquid form is 6 months at -20 centigrade/-80 centigrade. The shelf life of lyophilized form is 12 months at -20 centigrade/-80 centigrade.

Concentration A hardcopy of COA with reconstitution instruction is sent along with the products.

GENE INFORMATION

Gene Name [GIGYF2 GRB10 interacting GYF protein 2 \[Homo sapiens \(human\) \]](#)

Official Symbol [GIGYF2](#)

Synonyms GYF2; PERQ2; PERQ3; PARK11; TNRC15;

Gene ID [26058](#)

mRNA Refseq [NM_001103146](#)

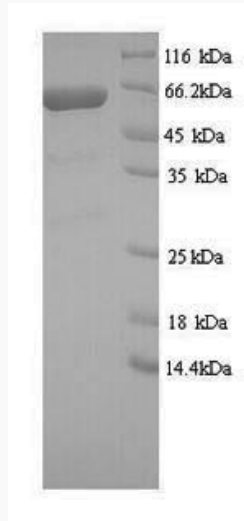
Protein Refseq [NP_001096616](#)

UniProt ID [Q6Y7W6](#)

 Tel: 1-631-559-9269 1-516-512-3133

 Email: info@creative-biomart.com  Fax: 1-631-938-8127

 45-1 Ramsey Road, Shirley, NY 11967, USA



(Tris-Glycine gel) Discontinuous SDS-PAGE (reduced) with 5% enrichment gel and 15% separation gel.

 Tel: 1-631-559-9269 1-516-512-3133

 Email: info@creative-biomart.com  Fax: 1-631-938-8127

 45-1 Ramsey Road, Shirley, NY 11967, USA