

Recombinant Human GIMAP1 Protein, Myc/DDK-tagged, C13 and N15-labeled

Cat. No. GIMAP1-2908H **Lot. No.** (See product label)

SPECIFICATION

Product Overview	GIMAP1 MS Standard C13 and N15-labeled recombinant protein (NP_570115) with a C-terminal MYC/DDK tag, was expressed in HEK293 cells.
Species	Human
Source	HEK293
Description	This gene encodes a protein belonging to the GTP-binding superfamily and to the immuno-associated nucleotide (IAN) subfamily of nucleotide-binding proteins. In humans, the IAN subfamily genes are located in a cluster at 7q36.1. This gene is thought to be involved in the differentiation of T helper (Th) cells of the Th1 lineage, and the related mouse gene has been shown to be critical for the development of mature B and T lymphocytes. Read-through transcription exists between this gene and the downstream GIMAP5 (GTPase, IMAP family member 5) gene.
Molecular Mass	34.4 kDa
AA Sequence	<p>MGGRKMATDEENVYGLEENAQSRQESTRRLILVGRTGAGKSATGNSILGQRRFFSR LGATSVTRACTTGSRRWDKCHVEVVDTPDIFSSQVSKTDPGCEERGH CYLLSAPGP HALLLV TQLGRFTAQDQQAVRQVRDMFGEDVLKWMVIVFTRKEDLAGGSLHDYVS NTENRALRELVAECGGRVCAFDNRATGREQEAQVEQLLGMVEGLVLEHKGAHYSN EVYELAQVLRWAGPEERLRRVAERVAARVQRRPWGAWLSARLWKWLKSPRSWRL GLALLLGGALLFWVLLHRRWSEAVAEVGPDRTRTRPLEQKLISEEDLAANDILDYKDD</p>

 Tel: 1-631-559-9269 1-516-512-3133

 Email: info@creative-biomart.com  Fax: 1-631-938-8127

 45-1 Ramsey Road, Shirley, NY 11967, USA

	DDKV
Purity	> 80% as determined by SDS-PAGE and Coomassie blue staining
Stability	Stable for 3 months from receipt of products under proper storage and handling conditions.
Storage	Store at -80 centigrade. Avoid repeated freeze-thaw cycles.
Concentration	50 µg/mL as determined by BCA
Storage Buffer	100 mM glycine, 25 mM Tris-HCl, pH 7.3.
GENE INFORMATION	
Gene Name	GIMAP1 GTPase, IMAP family member 1 [Homo sapiens (human)]
Official Symbol	GIMAP1
Synonyms	GIMAP1; GTPase, IMAP family member 1; GTPase IMAP family member 1; HIMAP1; IMAP1; IMAP38; immunity associated protein 1;
Gene ID	170575
mRNA Refseq	NM_130759
Protein Refseq	NP_570115
MIM	608084
UniProt ID	Q8WWP7

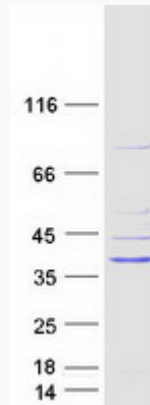
 Tel: 1-631-559-9269 1-516-512-3133

 Email: info@creative-biomart.com  Fax: 1-631-938-8127

 45-1 Ramsey Road, Shirley, NY 11967, USA



SDS-PAGE



Tel: 1-631-559-9269 1-516-512-3133

Email: info@creative-biomart.com Fax: 1-631-938-8127

45-1 Ramsey Road, Shirley, NY 11967, USA