

Recombinant Human GIMAP2 protein, GST-tagged

Cat. No. GIMAP2-13255H Lot. No. (See product label)

SPECIFICATION

Product Overview	Recombinant Human GIMAP2 protein(1-258 aa), fused with N-terminal GST tag, was expressed in E.coli.
Species	Human
Source	E.coli
ProteinLength	1-258 aa
Form	The purified protein was lyophilized from sterile phosphate-buffered saline (PBS: 58 mM Na ₂ HPO ₄ , 17 mM NaH ₂ PO ₄ , 68 mM NaCl, pH 8.0). Prior to lyophilization, 5% (w/v) trehalose and 5% (w/v) mannitol were incorporated as cryoprotective excipients. The protein was eluted with a buffer containing 100 mM reduced glutathione (GSH).
AASequence	MDQNEHSHWGP HA KGQCASRSELRIILVGKTGTGKSAAGNSILRKQAFESKLG SQT LTKTCSKSQGSWGNREI VI IDTPDMFSWKDHCEALYKEVQRCYLLSAPGPHVLLLVT QLGRYTSQDQQAQRVKEIFGEDAMGHTIVLFTHKEDLNGGSLMDYMHDS DNKAL SKLVAACGGRICAFNNRAEGSNQDDQVKELMDCIEDLLMEKNGDHYTNGLYSLIQR SKCGPVGSDERVKEFKQSLIKYMETQRSY TALAE
Purity	85%, by SDS-PAGE with Coomassie Brilliant Blue staining.
Storage	Store at 2-8°C for 1-2 weeks. Aliquot and store at -20°C to -80°C for up to 3 months, reconstitution with sterile water and addition of an equal volume of glycerol. Avoid

 Tel: 1-631-559-9269 1-516-512-3133

 Email: info@creative-biomart.com  Fax: 1-631-938-8127

 45-1 Ramsey Road, Shirley, NY 11967, USA

repeat freeze-thaw cycles.

Reconstitution

Dissolve the product in 200 µl sterile water to achieve a working concentration of 0.25 g/µl. If experimental compatibility allows, mix the aqueous solution with an equal volume of glycerol (1:1 ratio) after initial reconstitution.

GENE INFORMATION

Gene Name GIMAP2 GTPase, IMAP family member 2 [Homo sapiens]

Official Symbol GIMAP2

Synonyms GIMAP2; GTPase, IMAP family member 2; GTPase IMAP family member 2; DKFZp586D0824; HIMAP2; IMAP2; immunity associated protein 2; immunity-associated protein 2; MGC24275;

Gene ID 26157

mRNA Refseq NM_015660

Protein Refseq NP_056475

MIM 608085

UniProt ID Q9UG22

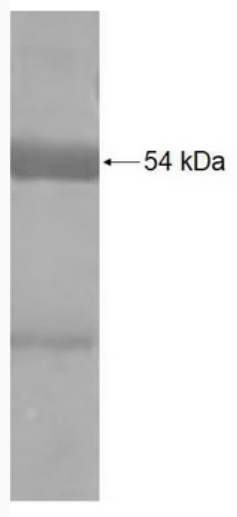
 Tel: 1-631-559-9269 1-516-512-3133

 Email: info@creative-biomart.com  Fax: 1-631-938-8127

 45-1 Ramsey Road, Shirley, NY 11967, USA



SDS-PAGE



Tel: 1-631-559-9269 1-516-512-3133

Email: info@creative-biomart.com Fax: 1-631-938-8127

45-1 Ramsey Road, Shirley, NY 11967, USA