

## Recombinant Human GIMAP2 Protein, GST-tagged

Cat. No. GIMAP2-4898H Lot. No. (See product label)

### SPECIFICATION

<b>Product Overview</b>	Human GIMAP2 full-length ORF ( NP_056475.1, 1 a.a. - 337 a.a.) recombinant protein with GST-tag at N-terminal.
<b>Species</b>	Human
<b>Source</b>	Wheat Germ
<b>Description</b>	This gene encodes a protein belonging to the GTP-binding superfamily and to the immuno-associated nucleotide (IAN) subfamily of nucleotide-binding proteins. In humans, the IAN subfamily genes are located in a cluster at 7q36.1. [provided by RefSeq]
<b>Molecular Mass</b>	64.4 kDa
<b>AA Sequence</b>	MDQNEHSHWGPHAKGQCASRSELRIILVGKTGTGKSAAGNSILRKQAFESKLGST LTKTCSKSQGSWGNREIVIIDTPDMFSWKDHCEALYKEVQRCYLLSAPGPHVLLLVT QLGRYTSQDQQAQRVKEIFGEDAMGHTIVLFTHKEDLNGGSLMDYMHDSDNKAL SKLVAACGGRICAFNNRAEGSNQDDQVKELMDCIEDLLMEKNGDHYTNGLYSLIQR SKCGPVGSDERVKEFKQSLIKYMETQRSYALAEANCLKGALIKTQLCVLFCIQFLR LILWLCILHSMCNLFCCLLFSMCNLFCSLLFIPKMLMIFLRTVIRLERKTPRL
<b>Applications</b>	Enzyme-linked Immunoabsorbent Assay Western Blot (Recombinant protein) Antibody Production Protein Array

 Tel: 1-631-559-9269 1-516-512-3133

 Email: [info@creative-biomart.com](mailto:info@creative-biomart.com)  Fax: 1-631-938-8127

 45-1 Ramsey Road, Shirley, NY 11967, USA

<b>Notes</b>	Best use within three months from the date of receipt of this protein.
<b>Storage</b>	Store at -80 centigrade. Aliquot to avoid repeated freezing and thawing.
<b>Storage Buffer</b>	50 mM Tris-HCl, 10 mM reduced Glutathione, pH=8.0 in the elution buffer.

## GENE INFORMATION

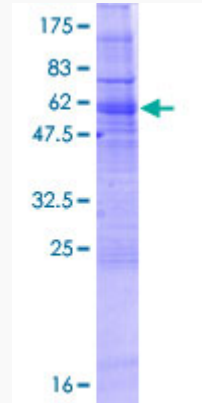
<b>Gene Name</b>	GIMAP2 GTPase, IMAP family member 2 [ Homo sapiens ]
<b>Official Symbol</b>	GIMAP2
<b>Synonyms</b>	GIMAP2; GTPase, IMAP family member 2; GTPase IMAP family member 2; DKFZp586D0824; HIMAP2; IMAP2; immunity associated protein 2; immunity-associated protein 2; MGC24275;
<b>Gene ID</b>	26157
<b>mRNA Refseq</b>	NM_015660
<b>Protein Refseq</b>	NP_056475
<b>MIM</b>	608085
<b>UniProt ID</b>	Q9UG22

 Tel: 1-631-559-9269 1-516-512-3133

 Email: [info@creative-biomart.com](mailto:info@creative-biomart.com)  Fax: 1-631-938-8127

 45-1 Ramsey Road, Shirley, NY 11967, USA

**Quality Control  
Testing**



12.5% SDS-PAGE Stained with Coomassie Blue.

 Tel: 1-631-559-9269 1-516-512-3133

 Email: [info@creative-biomart.com](mailto:info@creative-biomart.com)  Fax: 1-631-938-8127

 45-1 Ramsey Road, Shirley, NY 11967, USA