

Recombinant Human GIMAP6 Protein, GST-tagged

Cat. No. GIMAP6-4904H Lot. No. (See product label)

SPECIFICATION

Product Overview	Human GIMAP6 full-length ORF (NP_078987.3, 1 a.a. - 292 a.a.) recombinant protein with GST-tag at N-terminal.
Species	Human
Source	Wheat Germ
Description	This gene encodes a protein belonging to the GTP-binding superfamily and to the immuno-associated nucleotide (IAN) subfamily of nucleotide-binding proteins. In humans, IAN subfamily genes are located in a cluster at 7q36.1. Two transcript variants, one protein-coding and the other probably non-protein-coding, have been found for this gene. [provided by RefSeq]
Molecular Mass	59.3 kDa
AA Sequence	MEEEEYEQIPQENPPEELSQDPVLELSGGLREKEQKTPRRLRLILMGKTGSGKSAT GNSILGRDVFESKLSTRPVTKTSQRRSREWAGKELEVIDTPNILSPQVSPEVADAICQ AIVLSAPGPHAVLLVTQLGRFTDEDQQVVRRLQEVEFGVGVLGHTILVFTRKEDLAGG SLEDYVRETNNQALAWLDVTLARRHCGFNRAQGEEQEAQLRELMEKVEAIMWEN EGDYYSNKAYQYTQQNFRLKELQERQVSQGGQSEDVPGEESWLEGLSQQKKESEE AHRCLLGKADL
Applications	Enzyme-linked Immunoabsorbent Assay Western Blot (Recombinant protein) Antibody Production

 Tel: 1-631-559-9269 1-516-512-3133

 Email: info@creative-biomart.com  Fax: 1-631-938-8127

 45-1 Ramsey Road, Shirley, NY 11967, USA

Protein Array

Notes	Best use within three months from the date of receipt of this protein.
Storage	Store at -80 centigrade. Aliquot to avoid repeated freezing and thawing.
Storage Buffer	50 mM Tris-HCl, 10 mM reduced Glutathione, pH=8.0 in the elution buffer.

GENE INFORMATION

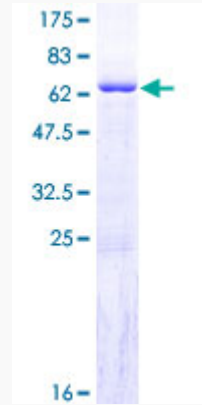
Gene Name	GIMAP6 GTPase, IMAP family member 6 [Homo sapiens]
Official Symbol	GIMAP6
Synonyms	GIMAP6; GTPase, IMAP family member 6; GTPase IMAP family member 6; FLJ22690; immune associated nucleotide 2; immune associated nucleotide 6; IAN2; IAN6; IAN-2; IAN-6; DKFZp686A01175;
Gene ID	474344
mRNA Refseq	NM_001244071
Protein Refseq	NP_001231000
MIM	616960
UniProt ID	Q6P9H5

 Tel: 1-631-559-9269 1-516-512-3133

 Email: info@creative-biomart.com  Fax: 1-631-938-8127

 45-1 Ramsey Road, Shirley, NY 11967, USA

**Quality Control
Testing**



12.5% SDS-PAGE Stained with Coomassie Blue.

 Tel: 1-631-559-9269 1-516-512-3133

 Email: info@creative-biomart.com  Fax: 1-631-938-8127

 45-1 Ramsey Road, Shirley, NY 11967, USA