

Recombinant Human GIMAP7 Protein, GST-tagged

Cat. No. GIMAP7-4905H Lot. No. (See product label)

SPECIFICATION

Product Overview	Human GIMAP7 full-length ORF (NP_694968.1, 1 a.a. - 300 a.a.) recombinant protein with GST-tag at N-terminal.
Species	Human
Source	Wheat Germ
Description	This gene encodes a protein belonging to the GTP-binding superfamily and to the immuno-associated nucleotide (IAN) subfamily of nucleotide-binding proteins. In humans, the IAN subfamily genes are located in a cluster at 7q36.1. [provided by RefSeq]
Molecular Mass	60.9 kDa
AA Sequence	MAESEDRLRIVLVGKTGSGKSATANTILGEEIFDSRIAAQAVTKNCQKASREWQGR DLLVVDTPGLFDTKESLDTTCKEISRCIISSCPGPHAILVLLLGRYTEEEQKTVALIKA VFGKSAMKHMVILFTRKEELEGQSFHDFIADADVGLKSIVKECGNRCCAFSNSKKTS KAEKESQVQELVELIEKMVQCNEGAYFSDDIYKDTEERLKQREEVLRKIYTDQLNEEI KLVEEDKHKSEEEKEKEIKLLKLYDEKIKNIREEAERNIFKDVFNRIWKMLSEIWHRF LSKCKFYSS
Applications	Enzyme-linked Immunoabsorbent Assay Western Blot (Recombinant protein) Antibody Production Protein Array

 Tel: 1-631-559-9269 1-516-512-3133

 Email: info@creative-biomart.com  Fax: 1-631-938-8127

 45-1 Ramsey Road, Shirley, NY 11967, USA

Notes	Best use within three months from the date of receipt of this protein.
Storage	Store at -80 centigrade. Aliquot to avoid repeated freezing and thawing.
Storage Buffer	50 mM Tris-HCl, 10 mM reduced Glutathione, pH=8.0 in the elution buffer.

GENE INFORMATION

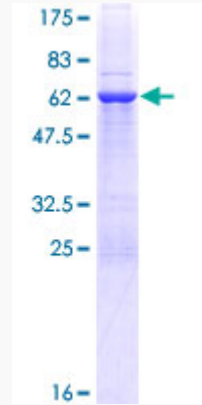
Gene Name	GIMAP7 GTPase, IMAP family member 7 [Homo sapiens]
Official Symbol	GIMAP7
Synonyms	GIMAP7; GTPase, IMAP family member 7; GTPase IMAP family member 7; IAN7; MGC27027; IAN-7; immune associated nucleotide; immunity-associated nucleotide 7 protein; hIAN7;
Gene ID	168537
mRNA Refseq	NM_153236
Protein Refseq	NP_694968
MIM	616961
UniProt ID	Q8NHV1

 Tel: 1-631-559-9269 1-516-512-3133

 Email: info@creative-biomart.com  Fax: 1-631-938-8127

 45-1 Ramsey Road, Shirley, NY 11967, USA

**Quality Control
Testing**



12.5% SDS-PAGE Stained with Coomassie Blue.

 Tel: 1-631-559-9269 1-516-512-3133

 Email: info@creative-biomart.com  Fax: 1-631-938-8127

 45-1 Ramsey Road, Shirley, NY 11967, USA