

Recombinant Human GIN1 Protein, GST-tagged

Cat. No. GIN1-4907H Lot. No. (See product label)

SPECIFICATION

Product Overview	Human GIN1 full-length ORF (AAH15325.1, 1 a.a. - 222 a.a.) recombinant protein with GST-tag at N-terminal.
Species	Human
Source	Wheat Germ
Description	GIN1 (Gypsy Retrotransposon Integrase 1) is a Protein Coding gene. Diseases associated with GIN1 include Parametritis and Osmotic Diarrhea. GO annotations related to this gene include nucleic acid binding.
Molecular Mass	52.1 kDa
AA Sequence	MVRSGKNGDLHLKQIAYYKRTCEYHSTTLPSERSGIRRAAKKFVFKEKKLFYVGKDR KQNRLVIVSEEEKKKVLRECHENDSGAHHGISRTLTLVESNYYWTSVTNDVKQWVY ACQHCQVAKNTVIVAPKQHLLKVENPWSLVTVDLMGPFHTSNRSHVYAIIMTDLFTK WIVILPLCDVSASEVSKAIINIFFLYGPPQKIIMDQRDEFIQQKVFISCKVQ
Applications	Enzyme-linked Immunoabsorbent Assay Western Blot (Recombinant protein) Antibody Production Protein Array
Notes	Best use within three months from the date of receipt of this protein.

 Tel: 1-631-559-9269 1-516-512-3133

 Email: info@creative-biomart.com  Fax: 1-631-938-8127

 45-1 Ramsey Road, Shirley, NY 11967, USA

Storage Store at -80 centigrade. Aliquot to avoid repeated freezing and thawing.

Storage Buffer 50 mM Tris-HCl, 10 mM reduced Glutathione, pH=8.0 in the elution buffer.

GENE INFORMATION

Gene Name GIN1 gypsy retrotransposon integrase 1 [Homo sapiens]

Official Symbol GIN1

Synonyms GIN1; gypsy retrotransposon integrase 1; ZH2C2, zinc finger, H2C2 domain containing; gypsy retrotransposon integrase-like protein 1; FLJ20125; GIN 1; gypsy integrase 1; TGIN1; Ty3/Gypsy integrase 1; zinc finger, H2C2 domain containing; zinc finger H2C2 domain-containing protein; GIN-1; ZH2C2;

Gene ID 54826

mRNA Refseq NM_017676

Protein Refseq NP_060146

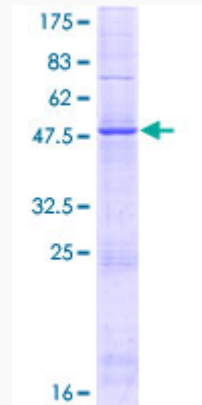
UniProt ID Q9NXP7

 Tel: 1-631-559-9269 1-516-512-3133

 Email: info@creative-biomart.com  Fax: 1-631-938-8127

 45-1 Ramsey Road, Shirley, NY 11967, USA

**Quality Control
Testing**



12.5% SDS-PAGE Stained with Coomassie Blue.

 Tel: 1-631-559-9269 1-516-512-3133

 Email: info@creative-biomart.com  Fax: 1-631-938-8127

 45-1 Ramsey Road, Shirley, NY 11967, USA