

Recombinant Human GINS1 Protein, GST-tagged

Cat. No. GINS1-4908H Lot. No. (See product label)

SPECIFICATION

| | |
|-------------------------|---|
| Product Overview | Human GINS1 full-length ORF (AAH12542.1, 1 a.a. - 196 a.a.) recombinant protein with GST-tag at N-terminal. |
| Species | Human |
| Source | Wheat Germ |
| Description | The yeast heterotetrameric GINS complex is made up of Sld5 (GINS4; MIM 610611), Psf1, Psf2 (GINS2; MIM 610609), and Psf3 (GINS3; MIM 610610). The formation of the GINS complex is essential for the initiation of DNA replication in yeast and <i>Xenopus</i> egg extracts (Ueno et al., 2005 [PubMed 16287864]).[supplied by OMIM |
| Molecular Mass | 47.3 kDa |
| AA Sequence | MFCEKAMELIRELHRAPEGQLPAFNEDGLRQVLEEMKALYEQNQSDVNEAKSGGR SDLIPTIKFRHCSSLRNRRCTVAYLYDRLLRIRALRWEYGSILPNALRFHMAAEEMEW FNNYKRSLATYMRSLGGDEGLDITQDMKPPKSLYIEVRCLKDYGEFEVDDGTSVLLK KNSQHFLPRWKCEQLIRQGVLEHILS |
| Applications | Enzyme-linked Immunoabsorbent Assay Western Blot (Recombinant protein) Antibody Production Protein Array |
| Notes | Best use within three months from the date of receipt of this protein. |

 Tel: 1-631-559-9269 1-516-512-3133

 Email: info@creative-biomart.com  Fax: 1-631-938-8127

 45-1 Ramsey Road, Shirley, NY 11967, USA

Storage Store at -80 centigrade. Aliquot to avoid repeated freezing and thawing.

Storage Buffer 50 mM Tris-HCl, 10 mM reduced Glutathione, pH=8.0 in the elution buffer.

GENE INFORMATION

Gene Name GINS1 GINS complex subunit 1 (Psf1 homolog) [Homo sapiens]

Official Symbol GINS1

Synonyms GINS1; GINS complex subunit 1 (Psf1 homolog); DNA replication complex GINS protein PSF1; KIAA0186; PSF1; partner of sld five-1; RP4-691N24.2;

Gene ID 9837

mRNA Refseq NM_021067

Protein Refseq NP_066545

MIM 610608

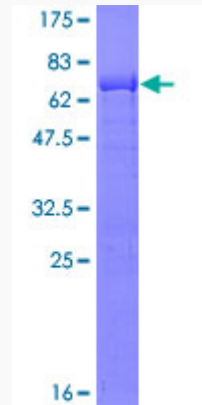
UniProt ID Q14691

 Tel: 1-631-559-9269 1-516-512-3133

 Email: info@creative-biomart.com  Fax: 1-631-938-8127

 45-1 Ramsey Road, Shirley, NY 11967, USA

**Quality Control
Testing**



12.5% SDS-PAGE Stained with Coomassie Blue.

 Tel: 1-631-559-9269 1-516-512-3133

 Email: info@creative-biomart.com  Fax: 1-631-938-8127

 45-1 Ramsey Road, Shirley, NY 11967, USA