

# Recombinant Human GINS Complex Subunit 2 (Psf2 Homolog), T7-tagged

Cat. No. GINS2-3054H Lot. No. (See product label)

## SPECIFICATION

<b>Product Overview</b>	Recombinant Human GINS2 was produced in <i>E.coli</i> with a T7 tag at N-terminus. MW = 21370 Da (1-185 aa).
<b>Species</b>	Human
<b>Source</b>	<i>E.coli</i>
<b>ProteinLength</b>	1-185 a.a.
<b>Description</b>	The yeast heterotetrameric GINS complex is made up of Sld5 (GINS4; MIM 610611), Psf1 (GINS1; MIM 610608), Psf2, and Psf3 (GINS3; MIM 610610). The formation of this complex is essential for the initiation of DNA replication in yeast and <i>Xenopus</i> egg extracts (Ueno et al., 2005 [PubMed 16287864]). See GINS1 for additional information about the GINS complex.
<b>Form</b>	10 mM Tris. pH 8.0. 0.1% Triton X-100. 0.002% NaN <sub>3</sub> .
<b>Purity</b>	95%.
<b>Applications</b>	MS. SDS.

## GENE INFORMATION

**Gene Name** [GINS2 GINS complex subunit 2 \(Psf2 homolog\) \[ Homo sapiens \]](#)

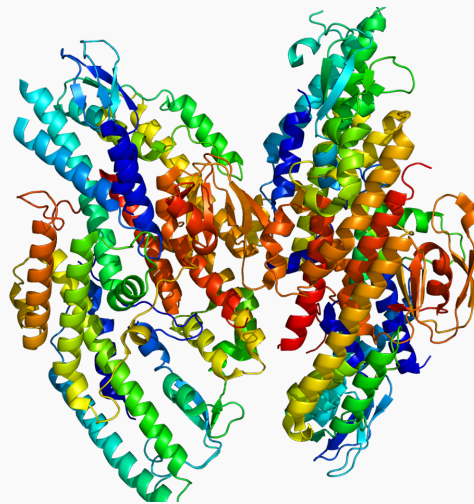
 Tel: 1-631-559-9269 1-516-512-3133

 Email: [info@creative-biomart.com](mailto:info@creative-biomart.com)  Fax: 1-631-938-8127

 45-1 Ramsey Road, Shirley, NY 11967, USA

<b>Synonyms</b>	GINS2; GINS complex subunit 2 (Psf2 homolog); PSF2; Pfs2; HSPC037; DNA replication complex GINS protein PSF2; GINS complex subunit 2
<b>Gene ID</b>	<a href="#">51659</a>
<b>mRNA Refseq</b>	<a href="#">NM_016095</a>
<b>Protein Refseq</b>	<a href="#">NP_057179</a>
<b>MIM</b>	<a href="#">610609</a>
<b>UniProt ID</b>	<a href="#">Q9Y248</a>
<b>Chromosome Location</b>	16q24.1
<b>Function</b>	protein binding

PDB rendering based on 2e9x.



 Tel: 1-631-559-9269 1-516-512-3133

 Email: [info@creative-biomart.com](mailto:info@creative-biomart.com)  Fax: 1-631-938-8127

 45-1 Ramsey Road, Shirley, NY 11967, USA