

Recombinant Human GINS3 Protein, GST-tagged

Cat. No. GINS3-4245H Lot. No. (See product label)

SPECIFICATION

Product Overview	Human FLJ13912 full-length ORF (AAH05879, 1 a.a. - 216 a.a.) recombinant protein with GST-tag at N-terminal.
Species	Human
Source	Wheat Germ
Description	This gene encodes a protein subunit of the GINS heterotetrameric complex, which is essential for the initiation of DNA replication and replisome progression in eukaryotes. Alternatively spliced transcript variants encoding distinct isoforms have been described. [provided by RefSeq]
Molecular Mass	49.28 kDa
AA Sequence	MSEAYFRVESGALGPEENFLSLDDILMSHEKLPVRTETAMPRLGAFFLERSAGAETD NAVPQGSKLELPLWLAKGLFDNKRRILSVELPKIYQEGWRTVFSADPNVVDLHKMG PHFYGFQSLLHFDSPENADISQSLQTFIGRFRRIMDSSQNAYSEDTSALVARLDE MERGLFQTGQKGLNDFQCWEKQGASQITASNLVQNYKKRKFTDMED
Applications	Enzyme-linked Immunoabsorbent Assay Western Blot (Recombinant protein) Antibody Production Protein Array
Notes	Best use within three months from the date of receipt of this protein.

 Tel: 1-631-559-9269 1-516-512-3133

 Email: info@creative-biomart.com  Fax: 1-631-938-8127

 45-1 Ramsey Road, Shirley, NY 11967, USA

Storage Store at -80 centigrade. Aliquot to avoid repeated freezing and thawing.

Storage Buffer 50 mM Tris-HCl, 10 mM reduced Glutathione, pH=8.0 in the elution buffer.

GENE INFORMATION

Gene Name GINS3 GINS complex subunit 3 (Psf3 homolog) [Homo sapiens]

Official Symbol GINS3

Synonyms GINS3; GINS complex subunit 3 (Psf3 homolog); DNA replication complex GINS protein PSF3; FLJ13912; PSF3;

Gene ID 64785

mRNA Refseq NM_001126129

Protein Refseq NP_001119601

MIM 610610

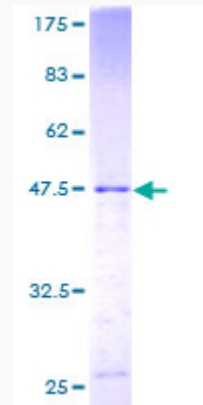
UniProt ID Q9BRX5

 Tel: 1-631-559-9269 1-516-512-3133

 Email: info@creative-biomart.com  Fax: 1-631-938-8127

 45-1 Ramsey Road, Shirley, NY 11967, USA

**Quality Control
Testing**



12.5% SDS-PAGE Stained with Coomassie Blue.

 Tel: 1-631-559-9269 1-516-512-3133

 Email: info@creative-biomart.com  Fax: 1-631-938-8127

 45-1 Ramsey Road, Shirley, NY 11967, USA