

Recombinant Full Length Human GIP Protein, C-Flag-tagged

Cat. No. GIP-1568HFL **Lot. No.** (See product label)

SPECIFICATION

Product Overview	Recombinant Full Length Human GIP Protein, fused to Flag-tag at C-terminus, was expressed in Mammalian cells.
Species	Human
Source	Mammalian Cells
Description	This gene encodes an incretin hormone and belongs to the glucagon superfamily. The encoded protein is important in maintaining glucose homeostasis as it is a potent stimulator of insulin secretion from pancreatic beta-cells following food ingestion and nutrient absorption. This gene stimulates insulin secretion via its G protein-coupled receptor activation of adenylyl cyclase and other signal transduction pathways. It is a relatively poor inhibitor of gastric acid secretion.
Form	25 mM Tris HCl, pH 7.3, 100 mM glycine, 10% glycerol.
Molecular Mass	4.9 kDa
AA Sequence	MVATKTFALLLLSLFLAVGLGEKKEGHFSALPSLPVGS HAKVSSPQPRGPRYAEGTF ISDYSIAMDKIHQ QDFVNWLLAQKGGKNDWKHNITQREARALELAGQANRKEEEAV EPQSSPAKNPSDEDLLRDLLIQELLAC LLDQTNLCRLRSRTRTRPLEQKLISEEDLAANDILDYKDDDDKV
Purity	> 80% as determined by SDS-PAGE and Coomassie blue staining.

 Tel: 1-631-559-9269 1-516-512-3133

 Email: info@creative-biomart.com  Fax: 1-631-938-8127

 45-1 Ramsey Road, Shirley, NY 11967, USA

Stability	Stable for 12 months from the date of receipt of the product under proper storage and handling conditions. Avoid repeated freeze-thaw cycles.
Storage	Store at -80 centigrade.
Concentration	>50 ug/mL as determined by microplate BCA method.
Preparation	Recombinant protein was captured through anti-DDK affinity column followed by conventional chromatography steps.
Protein Families	Druggable Genome, Secreted Protein
Full Length	Full L.

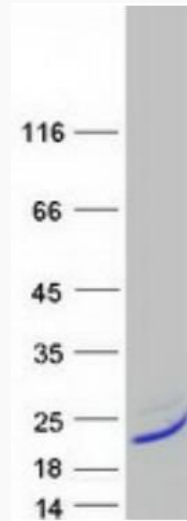
GENE INFORMATION

Gene Name	GIP gastric inhibitory polypeptide [Homo sapiens (human)]
Official Symbol	GIP
Synonyms	gastric inhibitory polypeptide; glucose-dependent insulinotropic polypeptide
Gene ID	2695
mRNA Refseq	NM_004123.3
Protein Refseq	NP_004114.1
MIM	137240
UniProt ID	P09681

 Tel: 1-631-559-9269 1-516-512-3133

 Email: info@creative-biomart.com  Fax: 1-631-938-8127

 45-1 Ramsey Road, Shirley, NY 11967, USA



Coomassie blue staining of purified GIP protein.

Tel: 1-631-559-9269 1-516-512-3133

Email: info@creative-biomart.com Fax: 1-631-938-8127

45-1 Ramsey Road, Shirley, NY 11967, USA