

Recombinant Human GIP Protein, Myc/DDK-tagged, C13 and N15-labeled

Cat. No. GIP-4581H **Lot. No.** (See product label)

SPECIFICATION

Product Overview	GIP MS Standard C13 and N15-labeled recombinant protein (NP_004114) with a C-terminal MYC/DDK tag, was expressed in HEK293 cells.
Species	Human
Source	HEK293
Description	This gene encodes an incretin hormone and belongs to the glucagon superfamily. The encoded protein is important in maintaining glucose homeostasis as it is a potent stimulator of insulin secretion from pancreatic beta-cells following food ingestion and nutrient absorption. This gene stimulates insulin secretion via its G protein-coupled receptor activation of adenylyl cyclase and other signal transduction pathways. It is a relatively poor inhibitor of gastric acid secretion.
Molecular Mass	17.1 kDa
AA Sequence	MVATKTFALLLLSLFLAVGLGEKKEGHFSALPSLPVGS HAKVSSPQPRGPRYAEGTF ISDYSIAMDKIHQQDFVNWLLAQKGGKNDWKHNITQREARALELAGQANRKEEEAV EPQSSPAKNPSDEDLLRDLLIQELLACLLDQTNLCRLRSRTRTRPLEQKLISEEDLAA NDILDYKDDDDKV
Purity	> 80% as determined by SDS-PAGE and Coomassie blue staining
Stability	Stable for 3 months from receipt of products under proper storage and handling

 Tel: 1-631-559-9269 1-516-512-3133

 Email: info@creative-biomart.com  Fax: 1-631-938-8127

 45-1 Ramsey Road, Shirley, NY 11967, USA

conditions.

Storage Store at -80 centigrade. Avoid repeated freeze-thaw cycles.

Concentration 50 µg/mL as determined by BCA

Storage Buffer 100 mM glycine, 25 mM Tris-HCl, pH 7.3.

GENE INFORMATION

Gene Name [GIP gastric inhibitory polypeptide \[Homo sapiens \(human\) \]](#)

Official Symbol [GIP](#)

Synonyms GIP; gastric inhibitory polypeptide; glucose dependent insulinotropic polypeptide; glucose-dependent insulinotropic polypeptide;

Gene ID [2695](#)

mRNA Refseq [NM_004123](#)

Protein Refseq [NP_004114](#)

MIM [137240](#)

UniProt ID [P09681](#)

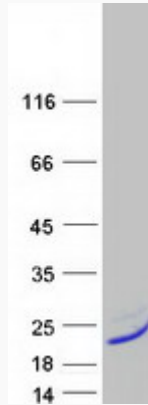
 Tel: 1-631-559-9269 1-516-512-3133

 Email: info@creative-biomart.com  Fax: 1-631-938-8127

 45-1 Ramsey Road, Shirley, NY 11967, USA



SDS-PAGE



Tel: 1-631-559-9269 1-516-512-3133

Email: info@creative-biomart.com Fax: 1-631-938-8127

45-1 Ramsey Road, Shirley, NY 11967, USA