

## Recombinant Human GIP Protein, GST-tagged

Cat. No. GIP-4912H Lot. No. (See product label)

### SPECIFICATION

<b>Product Overview</b>	Human GIP full-length ORF ( NP_004114.1, 1 a.a. - 153 a.a.) recombinant protein with GST-tag at N-terminal.
<b>Species</b>	Human
<b>Source</b>	Wheat Germ
<b>Description</b>	<p>This gene encodes an incretin hormone and belongs to the glucagon superfamily. The encoded protein is important in maintaining glucose homeostasis as it is a potent stimulator of insulin secretion from pancreatic beta-cells following food ingestion and nutrient absorption. This gene stimulates insulin secretion via its G protein-coupled receptor activation of adenylyl cyclase and other signal transduction pathways. It is a relatively poor inhibitor of gastric acid secretion. [provided by RefSeq</p>
<b>Molecular Mass</b>	43.5 kDa
<b>AA Sequence</b>	MVATKTFALLLLSLFLAVGLGEKKEGHFSALPSLPVGSNAKVSSPQPRGPRYAEGTF ISDYSIAMDKIHQQDFVNWLLAQKGGKNDWKHNITQREARALELASQANRKEEEAVE PQSSPAKNPSDEDLLRDLLIQELLACLLDQTNLCRLRSR
<b>Applications</b>	Enzyme-linked Immunoabsorbent Assay Western Blot (Recombinant protein) Antibody Production Protein Array

 Tel: 1-631-559-9269 1-516-512-3133

 Email: [info@creative-biomart.com](mailto:info@creative-biomart.com)  Fax: 1-631-938-8127

 45-1 Ramsey Road, Shirley, NY 11967, USA

<b>Notes</b>	Best use within three months from the date of receipt of this protein.
<b>Storage</b>	Store at -80 centigrade. Aliquot to avoid repeated freezing and thawing.
<b>Storage Buffer</b>	50 mM Tris-HCl, 10 mM reduced Glutathione, pH=8.0 in the elution buffer.

## GENE INFORMATION

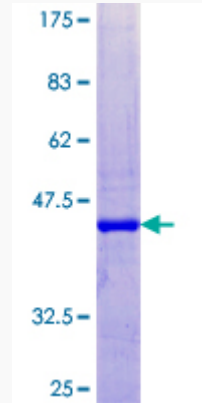
<b>Gene Name</b>	GIP gastric inhibitory polypeptide [ Homo sapiens ]
<b>Official Symbol</b>	GIP
<b>Synonyms</b>	GIP; gastric inhibitory polypeptide; glucose dependent insulinotropic polypeptide; glucose-dependent insulinotropic polypeptide;
<b>Gene ID</b>	2695
<b>mRNA Refseq</b>	NM_004123
<b>Protein Refseq</b>	NP_004114
<b>MIM</b>	137240
<b>UniProt ID</b>	P09681

 Tel: 1-631-559-9269 1-516-512-3133

 Email: [info@creative-biomart.com](mailto:info@creative-biomart.com)  Fax: 1-631-938-8127

 45-1 Ramsey Road, Shirley, NY 11967, USA

**Quality Control  
Testing**



12.5% SDS-PAGE Stained with Coomassie Blue.

 Tel: 1-631-559-9269 1-516-512-3133

 Email: [info@creative-biomart.com](mailto:info@creative-biomart.com)  Fax: 1-631-938-8127

 45-1 Ramsey Road, Shirley, NY 11967, USA