

Recombinant Human GIP protein, His-tagged

Cat. No. GIP-7855H Lot. No. (See product label)

SPECIFICATION

Product Overview	Recombinant Human GIP protein(P09681)(Glu22-Gln93), fused with C-terminal His tag, was expressed in HEK293.
Species	Human
Source	HEK293
ProteinLength	Glu22-Gln93
Tag	C-His
Form	Lyophilized from 0.22µm filtered solution in PBS (pH 7.4). Normally 5% trehalose is added as protectant before lyophilization.
Bio-activity	Immobilized Human GIP, His Tag at 1ug/ml (100ul/Well) on the plate. Dose response curve for Anti-GIP Antibody, hFc Tag with the EC50 of 4.7ng/ml determined by ELISA.
Molecular Mass	The protein has a predicted MW of 9.2 kDa. Due to glycosylation, the protein migrates to 15-25 kDa based on Tris-Bis PAGE result.
Endotoxin	Less than 1EU per µg by the LAL method.
Purity	> 95% as determined by Tris-Bis PAGE;> 95% as determined by HPLC

 Tel: 1-631-559-9269 1-516-512-3133

 Email: info@creative-biomart.com  Fax: 1-631-938-8127

 45-1 Ramsey Road, Shirley, NY 11967, USA

Storage Reconstituted protein stable at -80°C for 12 months, 4°C for 1 week. Use a manual defrost freezer and avoid repeated freeze-thaw cycles.

Reconstitution Centrifuge tubes before opening. Reconstituting to a concentration more than 100 µg/ml is recommended. Dissolve the lyophilized protein in distilled water.

GENE INFORMATION

Gene Name [GIP gastric inhibitory polypeptide \[Homo sapiens \]](#)

Official Symbol [GIP](#)

Synonyms GIP; gastric inhibitory polypeptide; glucose dependent insulinotropic polypeptide; glucose-dependent insulinotropic polypeptide;

Gene ID [2695](#)

mRNA Refseq [NM_004123](#)

Protein Refseq [NP_004114](#)

MIM [137240](#)

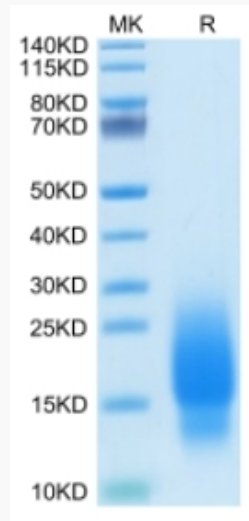
UniProt ID [P09681](#)

 Tel: 1-631-559-9269 1-516-512-3133

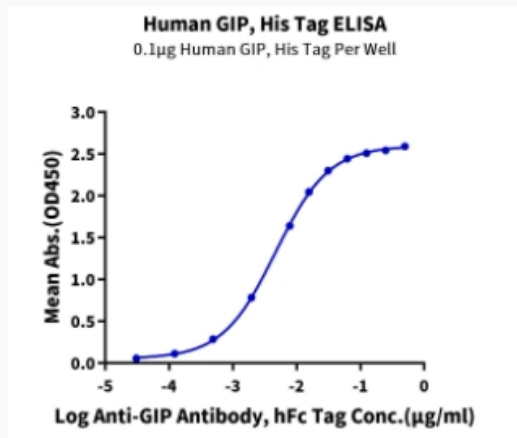
 Email: info@creative-biomart.com  Fax: 1-631-938-8127


 45-1 Ramsey Road, Shirley, NY 11967, USA

Tris-Bis PAGE




ELISA Data



 Tel: 1-631-559-9269 1-516-512-3133

 Email: info@creative-biomart.com  Fax: 1-631-938-8127

 45-1 Ramsey Road, Shirley, NY 11967, USA