

Recombinant Human GIPC2 protein, GST-tagged

Cat. No. GIPC2-13266H **Lot. No.** (See product label)

SPECIFICATION

Product Overview	Recombinant Human GIPC2 protein(1-315 aa), fused with N-terminal GST tag, was expressed in E.coli.
Species	Human
Source	E.coli
ProteinLength	1-315 aa
Form	The purified protein was lyophilized from sterile phosphate-buffered saline (PBS: 58 mM Na ₂ HPO ₄ , 17 mM NaH ₂ PO ₄ , 68 mM NaCl, pH 8.0). Prior to lyophilization, 5% (w/v) trehalose and 5% (w/v) mannitol were incorporated as cryoprotective excipients. The protein was eluted with a buffer containing 100 mM reduced glutathione (GSH).
AASequence	MPLKLRGKKKAKSKETAGLVEGEPTGAGGGSLASAPARRLVFHAQLAHGSATG RVEGFSSIQELYAQIAGAFEISPSEILYCTLNTPKIDMERLLGGQLGLEDFIFAHVKGIE KEVNVYKSEDSLGLTITDNGVGYAFIKRIKDGGVIDSVKTICVGDHIESINGENIVGWR HYDVAKKLKEELFTMKLIEPKKAFEIEPRSKAGKSSGEKIGCGRATLRLRSKGP ATVEEMPSETKAKAIEKIDDVLELYMGIRDIDLATTMFEAGKDKVNPDEFAVALDETL GDFAFPDEFVFDVWGVIGDAKRRGL
Purity	85%, by SDS-PAGE with Coomassie Brilliant Blue staining.
Storage	Store at 2-8°C for 1-2 weeks. Aliquot and store at -20°C to -80°C for up to 3 months,

 Tel: 1-631-559-9269 1-516-512-3133

 Email: info@creative-biomart.com  Fax: 1-631-938-8127

 45-1 Ramsey Road, Shirley, NY 11967, USA

reconstitution with sterile water and addition of an equal volume of glycerol. Avoid repeat freeze-thaw cycles.

Reconstitution

Dissolve the product in 200 µl sterile water to achieve a working concentration of 0.25 g/µl. If experimental compatibility allows, mix the aqueous solution with an equal volume of glycerol (1:1 ratio) after initial reconstitution.

GENE INFORMATION

Gene Name

GIPC2 GIPC PDZ domain containing family, member 2 [Homo sapiens]

Official Symbol

GIPC2

Synonyms

GIPC2; GIPC PDZ domain containing family, member 2; PDZ domain-containing protein GIPC2; FLJ20075; semaphorin cytoplasmic domain associated protein 2; SEMCAP 2; PDZ domain protein GIPC2; semaF cytoplasmic domain associated protein 2; SEMCAP2; SEMCAP-2;

Gene ID

54810

mRNA Refseq

NM_017655

Protein Refseq

NP_060125

UniProt ID

Q8TF65

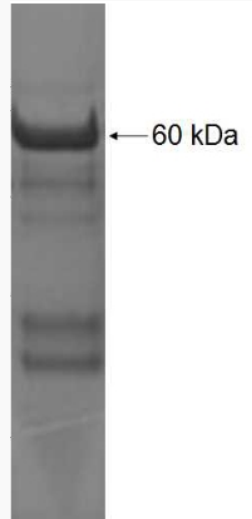
 Tel: 1-631-559-9269 1-516-512-3133

 Email: info@creative-biomart.com  Fax: 1-631-938-8127

 45-1 Ramsey Road, Shirley, NY 11967, USA



SDS-PAGE



Tel: 1-631-559-9269 1-516-512-3133

Email: info@creative-biomart.com Fax: 1-631-938-8127

45-1 Ramsey Road, Shirley, NY 11967, USA